

YOU DESERVE THE BEST SECURITY

# CHECK POINT PRO



“The PRO report helped with seeing issues that I may not normally see otherwise”

-Steve Zelik, Upper  
Chesapeake Health System  
(UCHS)

## REDEFINING CUSTOMER SUPPORT

Are you ready to take your support to the next level? In today's connected world security administrators must always be on and operating at full force, reaction times are crucial for business integrity. Check Point PRO support ensures smooth operations of all IT and business needs by instantly being made aware of any and all risks. Welcome to Check Point *PRO* -- Get proactive support today.



## REPORTING LIKE A PRO

Data gathered from your security gateways and management servers is analyzed and consolidated in an actionable report for easy reading. Learn to take preventive measures by using your actionable report and stay protected. You'll also be able to get the jump on analyzing trends from the automated tracking of incidences and resolutions that Check Point PRO support provides.



Proactive Daily Monitoring

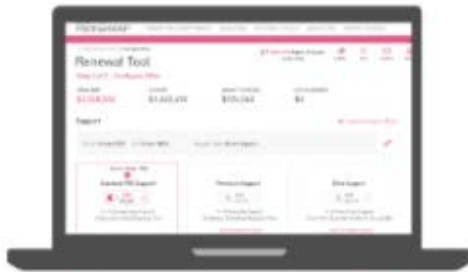


Proactive Ticket Creation



Professional Reporting

1


**Purchase Check Point PRO**

2


**Configure Your Check Point Policy**

3


**Setup Your Check Point PRO Contacts**

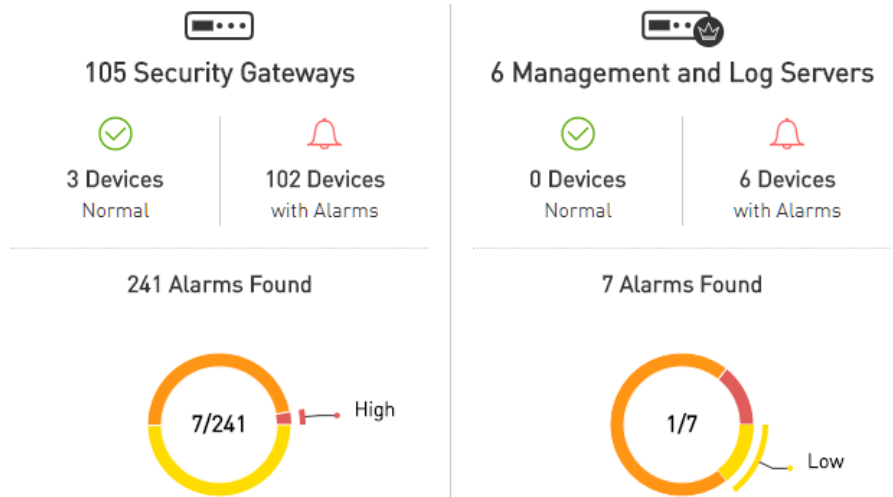
## CHECK POINT PRO SUPPORT BENEFITS

- Daily Monitoring of your Management and Security Gateways
- Proactive support for fast and accurate remediation
- Recurring detailed report with actionable insights
- Automatic ticket creation and escalation

## PROACTIVE, PROTECTIVE, PROFESSIONAL

Check Point PRO Support combines security expertise and machine intelligence to monitor your management and security gateways daily and identify points of failure before they occur.

When a severe issue is detected, a Check Point PRO expert proactively contacts you to help resolve the issue and prevent service downtime. Check Point PRO also provides you with a comprehensive report, delivering an overview of your overall security, diagnostics and actionable insights.



**Be Proactive, Stay Protected and Rely on Professionals with *Check Point PRO Support*.**

Be sure to [review](#) Check Point's support plans to see what option is perfect for you.

Learn more about [Check Point PRO support](#).

Contact a PRO expert  
[contact\\_pro@checkpoint.com](mailto:contact_pro@checkpoint.com)

**Worldwide Headquarters** | 5 Shlomo Kaplan Street, Tel Aviv 6789159, Israel | Tel: 972-3-753-4555 | Email: [info@checkpoint.com](mailto:info@checkpoint.com)  
**U.S. Headquarters** | 959 Skyway Road, Suite 300, San Carlos, CA 94070 | Tel: 800-429-4391; 650-628-2000 | Fax: 650-654-4233