

Module

4

Introduction to Voyager

Objectives:

- List the configuration settings required to connect to the Nokia IP Security Platform.
- Access the Nokia IP Security Platform.
- Connect to Nokia Network Voyager.
- Navigate within Nokia Network Voyager.
- Set the correct date and time on Nokia Network Voyager.
- Configure Nokia Network Voyager interfaces.
- Configure Nokia Network Voyager routes.
- Define host addresses on Nokia Network Voyager.
- Perform post-installation configuration steps on Nokia Network Voyager.

Introduction to Voyager

Voyager is a modern, interactive web interface:

- HTML, CCS & JavaScript
 - clean, consistent, interactive
- Frames
 - logical layout with object tree and most-used controls in consistent locations
- Tested to work with modern browsers
 - Internet Explorer
 - Netscape Navigator
 - Opera
 - Mozilla
 - Symbian



IPSO 3.9 and earlier supplied a text-based web browser (LYNX) The new Voyager is too complex for LYNX to render. Use “clish” when a command line based interface is needed.

Connecting and Authenticating

Once the setup wizard completes, open an Internet browser and log in to Voyager. Use the authentication screen to log in. Upon successful authentication, you will be presented with the Nokia Network Voyager home page.

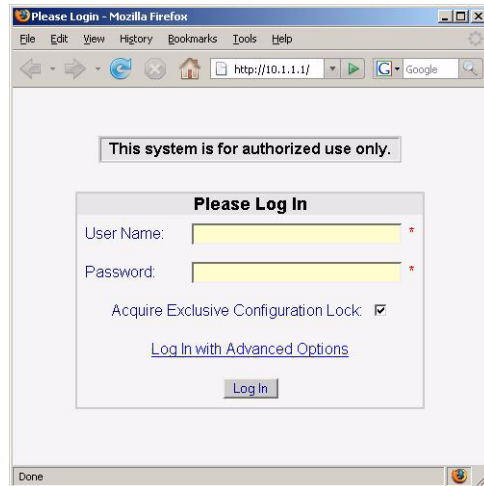


Figure 4-1: Connecting and Authenticating

The Nokia Network Voyager home page displays the name of the NSP, model number of the device, software release, and version, serial number, uptime, and memory. A title bar will always be made available across the top, a configuration tree on the left, and buttons for saving and other actions across the bottom.

Navigating within Voyager

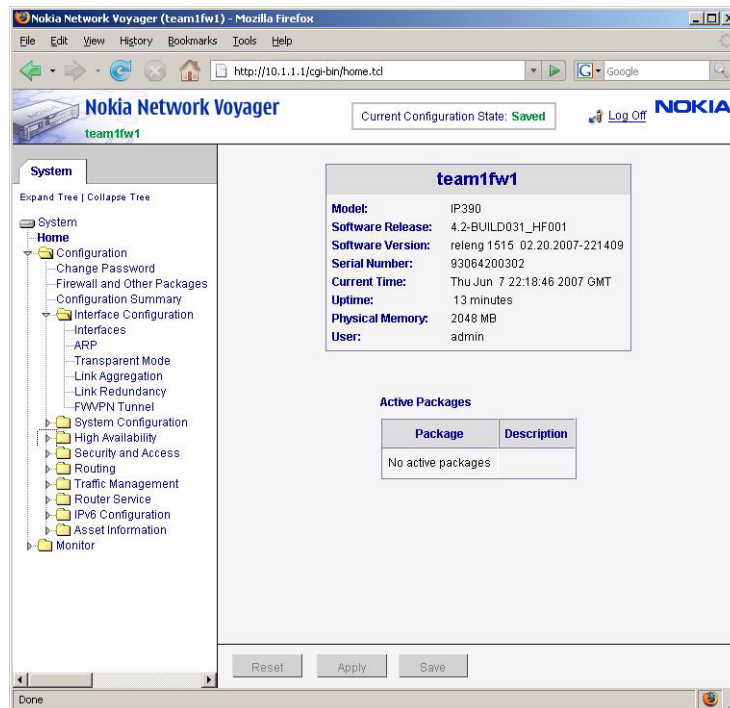


Figure 4-2: Voyager Navigation Controls

Reset, Apply and Save are navigation buttons for use with Voyager. They are disabled (gray) when no changes are pending.

Avoid using your browser's Back and Forward buttons while in Voyager. The browser caches HTML page information. Using Back and Forward may not display the latest configuration and diagnostic information as you move from page to page. Use the navigation tree in the left frame.

Accessing Features in Voyager

- Access all the features from the navigation tree
- “Expand Tree” to view all the features at a glance

- Navigation frame width is adjustable
- The Current feature is highlighted
- Tree hierarchy is consistent with IPSO 3.9 Voyager

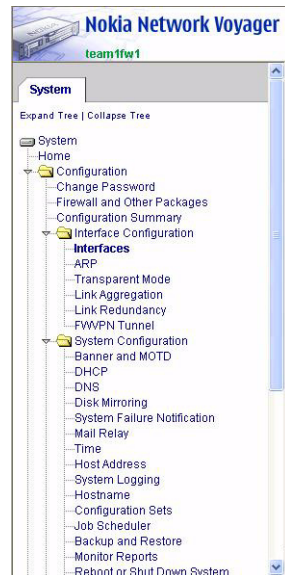


Figure 4-3: Voyager Navigation Tree

Configuration and Monitor Menus

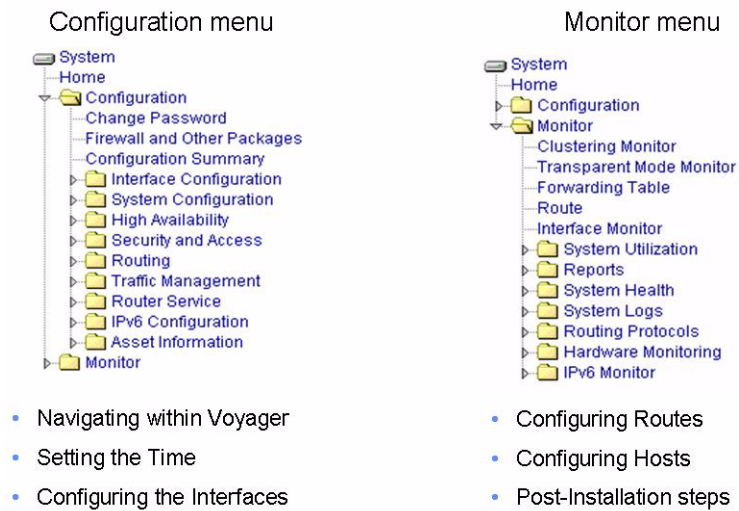


Figure 4-4: Configuration and Monitor

Configuring Voyager

After the initial configuration is complete, you can complete the IPSO configuration using Voyager.

After configuring IPSO, you will be able to:

- Navigate within Voyager
- Set the time
- Configure the interface, routes, and hosts
- Install and manage multiple images
- Configure Audit logs

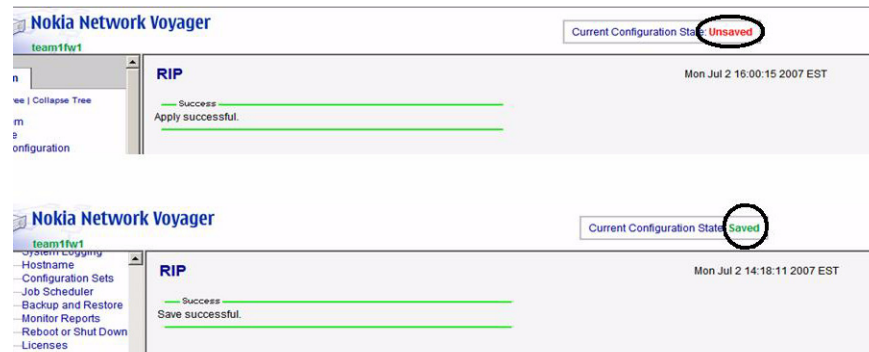


Figure 4-5: Save Statue

Shows whether you are in a Saved or Unsaved state.

Reset, Apply and Save Frame in Voyager

Buttons are on fixed frame, with no scrolling required to access them.

Apply /Save will be enabled only when appropriate.

This frame also shows the status of the config lock.

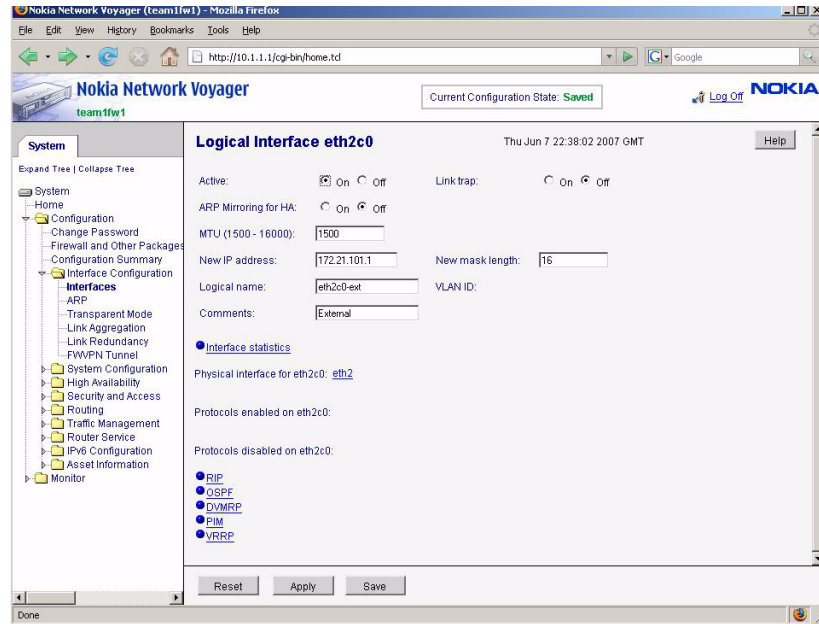


Figure 4-6: Voyager Frame