

Chapter

4

Software Modules

This chapter gives an overview of how to use the SmartCenter for Pointsec - MI software modules. Modules are necessary for the deployment and management of specific security products on end-user devices.

For instance, if you want to use SmartCenter for Pointsec - MI to install Pointsec PC on the end-user workstations in your organization, you must first install the Pointsec PC module in SmartCenter for Pointsec - MI.

Objectives:

- Distinguish between a software module and security module
- Access Software & Security module information in the MIMC

Key Terms:

- Software Module
- Security Module

About SmartCenter for Pointsec - MI Modules

Different SmartCenter for Pointsec - MI modules have different functions depending on the features of the security product it manages. At the base, there are two types of software modules used in the framework: device agents and security software.

Device agents include the device agent installed on all MI clients, and optionally the User Collector. Security software would include Check Point Full Disk Encryption (Pointsec PC), Check Point Media Encryption (Pointsec Protector), and Check Point Mobile Encryption (Pointsec Mobile).

For this reason, this section gives only a general overview of the functions available in a SmartCenter for Pointsec - MI module. SmartCenter for Pointsec - MI modules in this general sense, give the administrator the ability to carry out the following tasks:

- Specifying security settings to be deployed on an organization's devices
- Deploying a security product, such Pointsec PC, on end-user devices
- Updating the security profile deployed on the devices in an organization
- Removing the security product from end-user devices
- Providing Remote Help to users in an organization when their devices have become locked or the user has forgotten his/her password.



Installing a module into the SmartCenter for Pointsec - MI framework, differs for each product. Refer to the documentation delivered with the relevant SmartCenter for Pointsec - MI module.

Accessing Modules in SmartCenter for Pointsec - MI

1. In the SmartCenter for Pointsec - MI management console, click **Software**.

An explorer tree showing the device agents and software modules installed in the SmartCenter for Pointsec - MI framework opens:

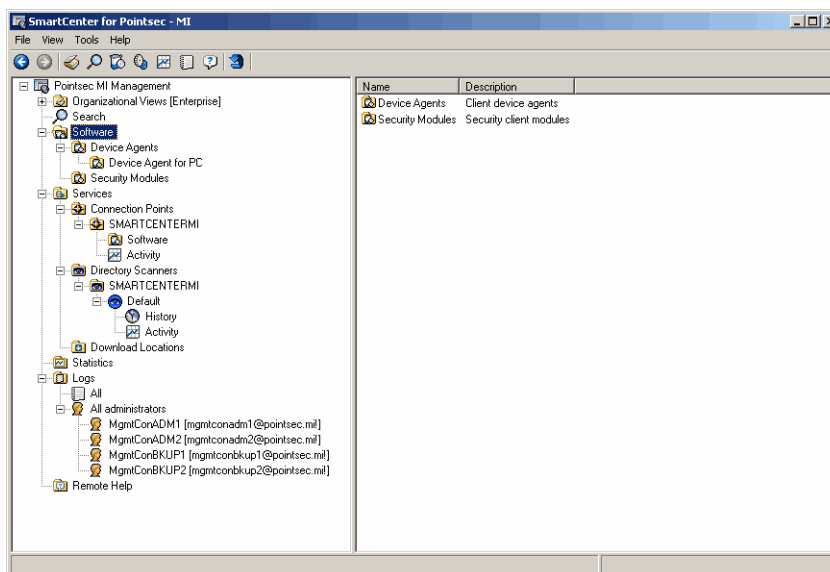


Figure 4-1: MIMC - Software Branch Opened

2. Double-click **Device Agents**. The modules which have been installed in the SmartCenter for Pointsec - MI framework are displayed:

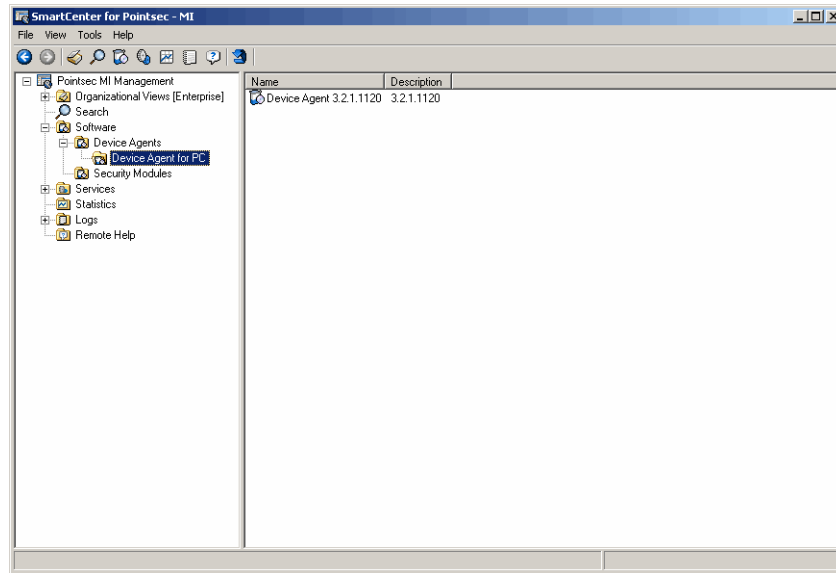


Figure 4-2: MIMC - Software - Device Agent 3.2.1.1120

3. Browse to and right-click on a specific software module and select **Properties** to view its properties. A property sheet opens, displaying version name and number of the software:

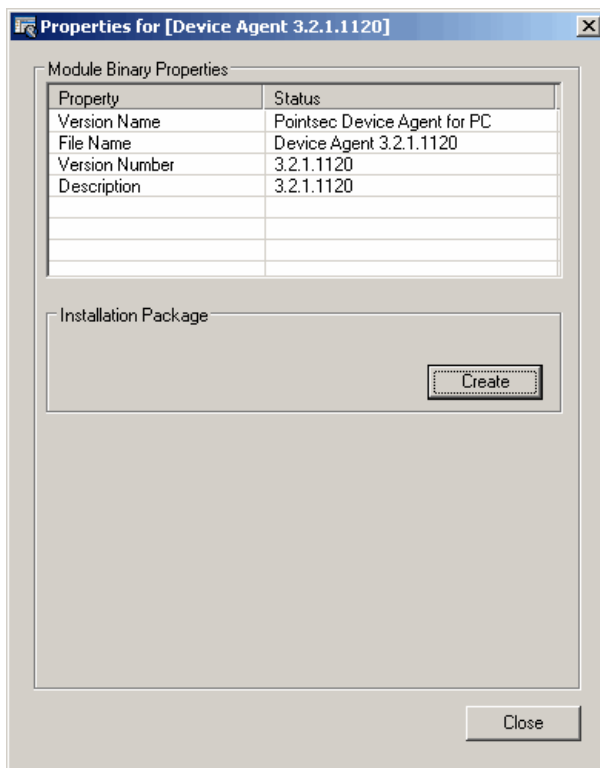


Figure 4-3: Device Agent Properties Window

Accessing Properties for the Security Product

In addition to being able to view the software modules via the Software section of the MIMC, you can also select a specific Organizational Unit to see what software products are available on devices in that OU. For each security product managed by SmartCenter for Pointsec - MI, you can view the properties for the product from any point in the OU hierarchy that module is associated with.

1. In the SmartCenter for Pointsec – MI management console, explorer, right-click on an Organizational View and select **Properties**. The OU Properties dialog box opens:

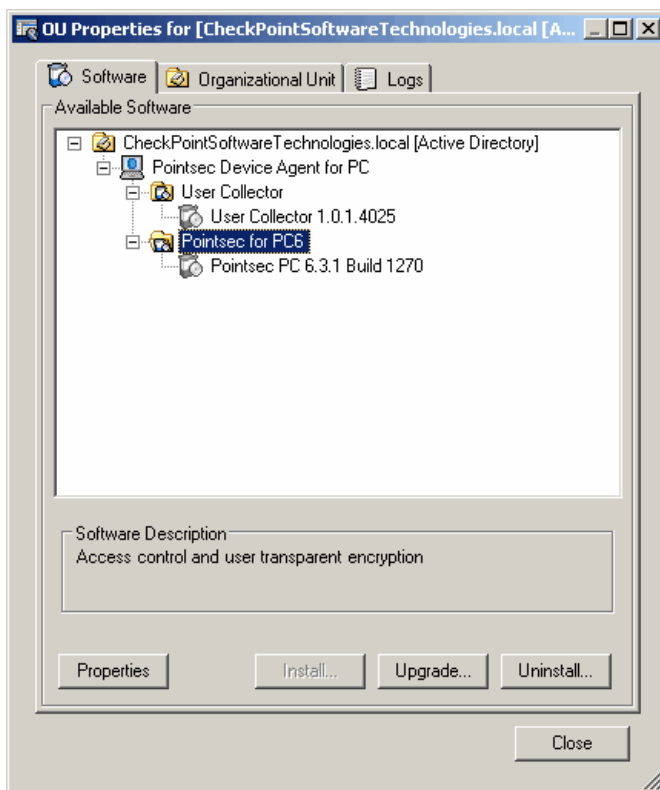


Figure 4-4: MIMC - OU Properties

2. On the **Software** tab, select the relevant security product and click **Properties**.

The OU property sheet for the selected product opens. For example, the Pointsec PC product property sheet:

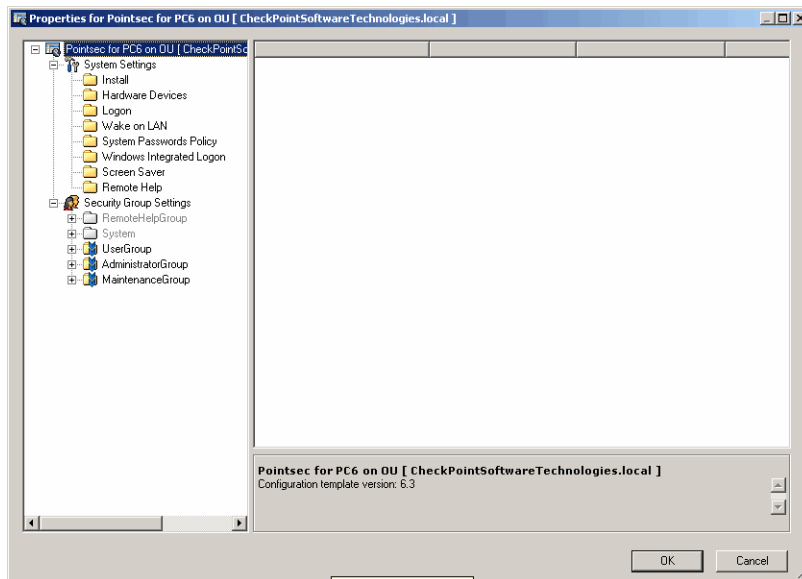


Figure 4-5: Pointsec PC Properties Window

From here, the administrator can configure security module properties for the selected security product and accounts, in this case Pointsec PC, for deployment to workstations in the organization.

