



Check Point Web Visualization Tool for NG AI R55

June 2004

We Secure the Internet.

<http://www.checkpoint.com>

In This Document

<i>Need for Web Visualization</i>	<i>page 1</i>
<i>The Web Visualization Solution</i>	<i>page 1</i>
<i>What's New</i>	<i>page 2</i>
<i>Installation</i>	<i>page 2</i>
<i>Configuration</i>	<i>page 2</i>
<i>Acknowledgement</i>	<i>page 5</i>

Need for Web Visualization

Many players in an organization, such as security administrators or executives, have the need to view the SmartCenter configuration. They do not necessarily want, nor are they necessarily permitted to organize or manage any configuration settings.

The Web Visualization Solution

The Web Visualization solution exports the SmartCenter's configuration into a viewable format. The exported information represents a snapshot of the database that can be viewed offline using all major web browsers without having to be connected to the SmartCenter Server.

The SmartCenter's configuration settings can be exported into one of the two following formats:

- Simplified
- Advanced

Simplified Format

This format captures all of the relevant information and places it into a single HTML file. The information is sorted according to type and listed in alphabetical order. For example, all Gateways will be displayed one beneath the other in alphabetical order. Since this format consolidates all of the configuration settings into a single file, the Simplified format makes printing and emailing the information very easy.

Advanced Format

The Advanced format gathers the data into several XML files and each XML file represents an object table or a Rule Base. The data captured is then divided into logical segments which can be viewed separately. This format includes icons used in SmartDashboard and are helpful in the categorization of the objects. The Advanced format can be customized and the data in the files can be utilized for other purposes such as using the data in other applications that can read XML. This format also provides a set of default XSL files.

What's New

Several new features were added to the latest version of the Web Visualization Tool.

- SmartDefense - The SmartDefense configuration has been added to the output shown by the Web Visualization Tool to offer a broader picture of the SmartCenter's configuration.
- `-w directory` - The `-w directory` command is used to have proper access to the SmartDefence help files. The directory specified in this command should be the folder where the Web Visualization Tool is installed. This command is used when using the Advanced format.
- Using Certificate when running the Simplified Format - A certificate file path can be provided instead of using a user name to run the utility.

System and Software Requirements

Supported Operating Systems:

- Windows supported by SmartConsole
- Linux
- Solaris
- IPSO

For a complete list of supported Operating System versions, see the *Release Notes* at www.checkpoint.com.

Supported Software:

- VPN-1 NG with Application Intelligence (R55)

Installation

To install the Web Visualization Tool, download the `.tgz` file specific to your Operating System which can be found at www.checkpoint.com and extract using `gtar` or `gzip`.

The Web Visualization Tool needs access to Check Point libraries when it is gathering data and creating files. Therefore, the `.tgz` file needs to be extracted to a particular directory based on what computer is being used. When running the utility on a SmartCenter Server, the Web Visualization Tool may be installed anywhere on the server. When running the utility on a computer with only SmartConsole, the Web Visualization Tool must be installed in the Program directory of the SmartConsole.

If the tool is installed in the SmartDashboard program directory, it is alright if the installation overwrites existing libraries. However, a backup of the libraries before the installation is recommended.



Note - When running the utility under the Windows operating system, use `cmd.exe` (Start | Run | `cmd.exe`)

Configuration

The Simplified utility and the Advanced utility are two separate standalone Command Line utilities which can be used in order to implement Web Visualization.

The Simplified Format Utility

During the running of the Simplified utility an HTML file is generated. By default the HTML file is named `1.html` and is placed in the root directory where the Web Visualization Tool is installed.

```
cpdb2html <cpdb2html_path> <output_directory> <SmartCenter_Server>
<admin_name or certificate_file> <password> [-o output_file_name] [ -m
host_name] [-gr] [-go]
```

where:

- `cpdb2html_path` is the Web Visualization Tool's installation directory.
- `output_directory` is the path to where the html file will be written.
- `SmartCenter_Server` is the name or IP address of the Management server. In Provider-1 this should be the virtual IP address associated with the CMA.
- `admin_name` or `certificate` is the user name of the SmartCenter Server administrator or the full path of the certificate file.
- `password` is the administrator's password or the certificate password.
- `-o output_file_name` is the name of the HTML file that will be generated, (where the default file name is `1.html`).
- `-m host_name` is the name of the module whose database information you would like to view.
- `-gr` is for Check Point Provider-1 users only. When this option is set the output includes customer rules only, (no global rules).
- `-go` is for Check Point Provider-1 users only. When this option is set the output will include customer objects only (no global objects).

FIGURE 1 HTML Index Page

Check Point Web Visualization Tool

Index

- [Security Policy](#)
- [Address Translation Policy](#)
- [SmartDefense](#)
- [Network Objects](#)
- [Users](#)
- [Services](#)

Copyright © 1994-2004 [Check Point Software Technologies Ltd.](#) All Rights Reserved.

Security Policy: Standard

NO.	SOURCE	DESTINATION	VPN	SERVICE	ACTION	TRACK	INSTALL ON	TIME	COMMENT
1	Any	Any	Any	Any	drop	None	Any	Any	

[back to index](#)

The Advanced Format Utility

When the Advanced utility is run, several XML files are generated and placed in the XML folder in the Web Visualization Tool directory.

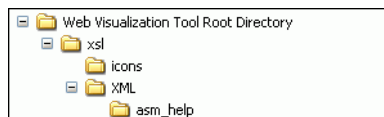
```
cpdb2web [-s SmartCenter Server] [-u admin name | -a certificate file]
[-p password] [-o output file path] [-t tables names] [-c | -m host name]
[-l packages names] [-gr] [-go] -w directory
```

where:

- `-s SmartCenter Server` is the name or IP Address of the SmartCenter Server. In Provider-1 the host should be the virtual IP Address of the CMA.
- `-u admin name` is the user name of the SmartCenter Server administrator.
- `-a certificate file` is the path of a Check Point certificate for the administrator who has permissions for reading the Check Point objects.
- `-p password` is the administrator's password.
- `-o output file path` is the full path for the output files. The XML files should be placed in the XML subdirectory of the XSL directory which comes with the package, since all related files should be stored in the XSL directory.
- `-t tables names` is an optional parameter that allows you to specify a specific table (where all available scheme tables can be used). In order to export a list of tables, the tables names should be printed using a comma as a separator. Spaces cannot be used as a separator. If this parameter isn't specified, all the default tables (including Policies, Network Objects, Services, Users and Communities) will be exported. However; the initial export operation of the Communities scheme table will not include the GUI.
- `-c` this is an optional parameter that triggers the exporting of the active Policy Package only, instead of exporting all existing Policy Packages by default. The active Policy Package is the Policy Package that is currently open in SmartDashboard.
- `-m` the same as the `-c` option. It triggers the exporting of the active Policy Package only, but only on the given host.
- `-l packages names` is an optional parameter that allows you to export a specific Policy Package, instead of exporting all existing Policy Packages by default. In order to export a list of packages, the packages names should be printed using a comma as a separator. Spaces cannot be used as separators.
- `-gr` is an optional parameter relevant to Provider-1 users only. When this is switched on, the output does not include Global Rules, but rather it contains Customer Rules only.
- `-go` is an optional parameter relevant to Provider-1 users only. When this is switched on, the output does not include Global Objects, but rather it contains Customer objects only.
- `-w directory` should be used in order to have proper access to the help files.

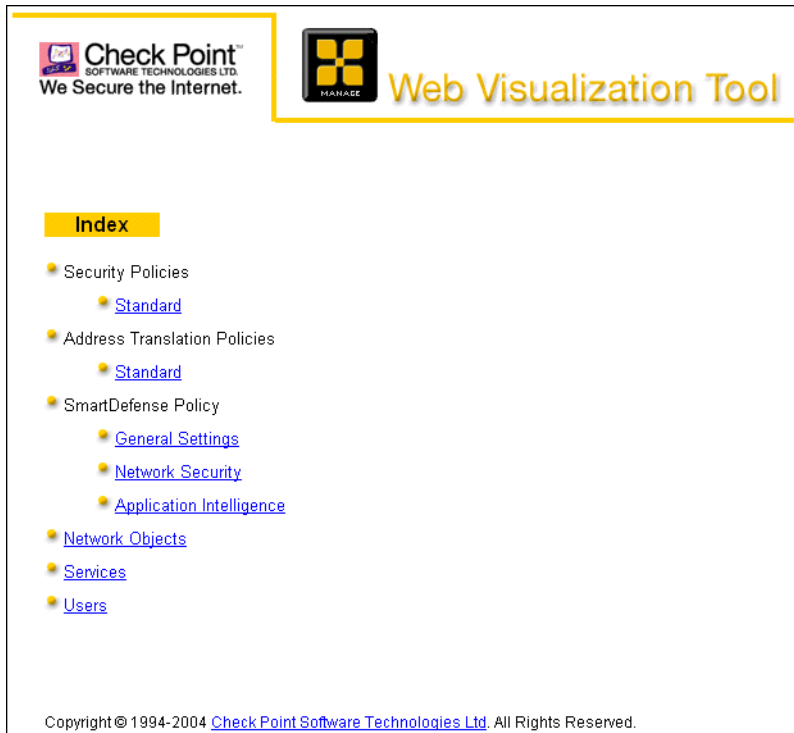
To view the XML files:

FIGURE 2 Web Visualization Installation Directory.



- 1 Run `index.xml` in the XSL directory to view output.

FIGURE 3 XML Index Page



Acknowledgement

This product includes software developed by the Apache Software Foundation:
<http://www.apache.org/>