

# MAXIMIZE SECURITY: SEGMENT MANAGEMENT INTO MULTIPLE VIRTUAL DOMAINS

## INSIGHT

Companies of any size face security management challenges when their business spans offices located in several regions or countries. Multiple security gateways, multiple sites requiring different or conflicting security policies and multiple administrators can quickly create a complex security environment. Administrators need the right tools to effectively manage multiple security policies with rules enforcing appropriate user access and preventing attacks. This enables secure communication and fail-over capabilities.

## SOLUTION

Check Point Multi-Domain Security Management provides more security and control by segmenting your security management into multiple virtual domains. Any size business can benefit—easily creating virtual domains based on geography, business unit or security functions to strengthen security and simplify management. IT managers can easily deploy Multi-Domain Security Management into their current security environment, simplifying administration and leveraging their existing infrastructure. Organizations can expand their security management at any time, deploying new security domains with a single click.

## EFFICIENT, SECURE, CONSOLIDATED MANAGEMENT

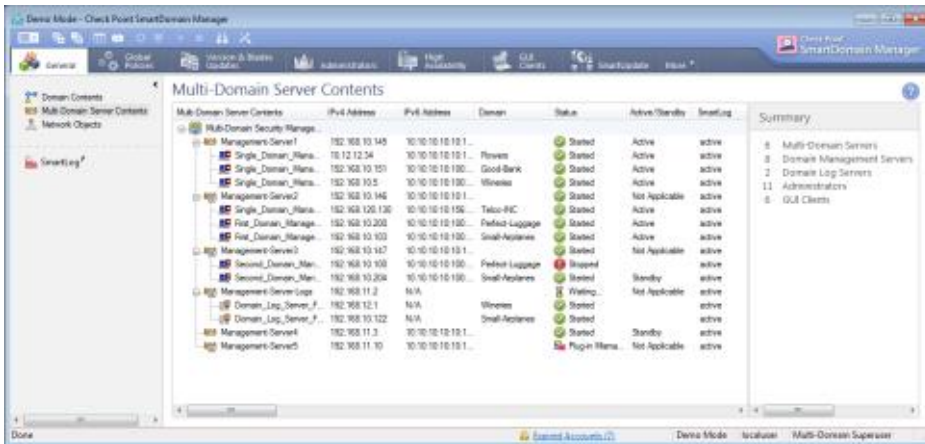
When complexity or geography complicate management and threaten security, segmenting security into multiple virtual domains can provide dramatic improvements in operational efficiency and better security. Multi-Domain Security Management enables simultaneous, central management of many distinct security policies and consolidation of security hardware. Multi-Domain Management software blades, based on proven technology, help administrators consolidate their security management while preserving the independence of each domain. The Global Policy Software Blade enforces a common security baseline, while Security Domain Software Blades enable easy creation of new virtual management domains.

## PRODUCT FEATURES

- ✓ Multi-domain, multi-policy management
- ✓ Centralized, independent security management and monitoring for all virtual domains
- ✓ Granular, role-based administration for increased accuracy
- ✓ Secure communications between all multi-domain components
- ✓ Flexible Multi-Domain Software Blades leverage existing security management

## MULTI-DOMAIN, MULTI-POLICY MANAGEMENT

Segregate complex management environments into multiple domains. Each management domain is an independent security management environment with a separate database, log server and its own set of security policies.



## SECURE ARCHITECTURE

Create separate certificate authorities for each management domain and the multi-domain system to ensure secure and private communications between gateways and their management domains, and between management domains and the multi-domain system.

## GLOBAL POLICY

Define templates for global security rules and assign them to multiple domains. Global security policy can be assigned to all managed domains or just to a select group of domains.

## GRANULAR ADMINISTRATOR CONTROLS

Create and centrally manage multiple administrators for multi-domain management environments. Administrators can be assigned to specific domains.

## CENTRALIZED MONITORING

Monitor all multi-domain system components (domains, global policy, administrators, etc.) and gateways from a central location.

## DOMAIN-INDEPENDENT LOG SERVER

Collect and store security gateway logs for each domain in a separate, independent log server.

## REDUNDANCY AND BACKUP

Synchronize multi-domain management databases (MDS database, global policy and ICA database) between multiple multi-domain servers. Rest assured knowing that your security management is backed up and highly available.

## PRODUCT BENEFITS

- ✓ Simplified management and provisioning of security in complex environments
- ✓ Stronger security with a single configuration for VPN, firewall, IPS and other protections
- ✓ Increased efficiency through consolidation of security management infrastructure and resources
- ✓ Common security baseline enforced across multiple domains with the Global Policy Software Blade
- ✓ Easy transition to multi-domain management, adding new security management domains for as little as \$1500 per Domain Software Blade

## MULTI-DOMAIN SECURITY MANAGEMENT FEATURES

Feature	Details
<b>Multi-Domain Security Management</b>	
<b>Multiple Domain-Based Management</b>	<ul style="list-style-type: none"> <li>➤ Complex management environment can be segregated into multiple management domains.</li> <li>➤ Each management domain is an independent security management environment with a separate database, log server and its own set of security policies.</li> </ul>
<b>Multi-Domain Dashboard</b>	<ul style="list-style-type: none"> <li>➤ Single security console to manage multiple domains.</li> <li>➤ Graphical interface to view, create and manage all management domains.</li> <li>➤ Seamless launch of Check Point SmartConsole applications (SmartDashboard, SmartView Tracker, etc.) for each management domain.</li> <li>➤ Assign global policy to different management domains.</li> <li>➤ Create and manage administrators and GUI clients.</li> </ul>
<b>Distributed Domain Management</b>	<ul style="list-style-type: none"> <li>➤ Management domains can be distributed across many multi-domain servers.</li> </ul>

### Secure Communications for All Multi-Domain Components

<b>Global Rules</b>	<ul style="list-style-type: none"> <li>➤ Define global security rules templates and assign them to virtual domains.</li> <li>➤ Global policy can be assigned to group of management domains.</li> </ul>
<b>Global Objects</b>	<ul style="list-style-type: none"> <li>➤ Centralized configuration and management of shared objects that can be used across multiple domains.</li> </ul>
<b>Global VPN Policy</b>	<ul style="list-style-type: none"> <li>➤ Centralized definition and management of VPN communities across multiple domains.</li> </ul>
<b>Global IPS Policy</b>	<ul style="list-style-type: none"> <li>➤ Centralized definition and management of IPS policies across multiple management domains.</li> </ul>

Feature	Details
<b>Granular Administrator Controls</b>	
<b>Granular Role-Based Administration</b>	<ul style="list-style-type: none"> <li>➤ Create and centrally manage multiple administrators for multi-domain environments.</li> <li>➤ Assign administrators to specific domains.</li> </ul>
<b>Hierarchical Administrator Role Support</b>	<ul style="list-style-type: none"> <li>➤ Assign administrator rights to manage specific domains and rights and permissions to management different aspects of the multi-domain system.</li> </ul>
<b>Multiple Simultaneous Administrator Access</b>	<ul style="list-style-type: none"> <li>➤ Allows multiple administrators to work on different management domains simultaneously.</li> </ul>
<b>Multiple Authentication Methods For Administrators</b>	<ul style="list-style-type: none"> <li>➤ Multiple authentication methods for administrators using internal certificate authority or external third party systems including RADIUS, TACACS, and RSA.</li> </ul>

Feature	Details
---------	---------

Monitoring	
<b>Centralized Monitoring of Multi-Domain Systems</b>	➤ Centralized monitoring of all multi-domain system components (domains, global policy, administrators, etc.)
<b>Centralized Monitoring of Managed Gateways</b>	➤ Centralized monitoring of all gateways managed by the multi-domain management system.

Log Management	
<b>Domain Independent Log Server</b>	➤ Each domain has a predefined log server for collection and storage of logs from all security gateways managed by that domain.
<b>Multi-Domain Log Module Support</b>	➤ Optional standalone multi-domain server dedicated to log collection and storage, allowing separation of critical management activities from logging traffic.
<b>Domain for Log Server Support</b>	➤ Optional dedicated domain for log collection and storage, allowing separation of critical domain management activities from logging activities.

Redundancy and Backup	
<b>Multi-Domain Server Synchronization</b>	➤ Support synchronization of multi-domain management databases (MDS database, Global Policy and ICA database) between multiple multi-domain servers.
<b>Domain High Availability</b>	➤ Allow synchronization of domain databases between multiple multi-domain servers.
<b>Export/Import of Multi-Domain Systems and Domains</b>	➤ Export/Import entire multi-domain system or a specific domain for maximum backup and recovery options.
<b>Security Management Backup</b>	➤ Backup your virtual management domain to a standard security management system.

Deployment	
<b>Multi-Platform Support</b>	➤ Supported on SecurePlatform, Red Hat Linux and Solaris

## MULTI-DOMAIN SECURITY MANAGEMENT OPEN SERVER REQUIREMENTS

Component	Linux	GAiA & SecurePlatform
<b>CPU</b>	Intel Pentium Processor E2140 or 2GHz Equivalent Processor	
<b>Memory</b>	4GB	4GB
<b>Disk Space</b>	2GB	10GB (install includes OS)
<b>CD-ROM Drive</b>	Yes	Yes (bootable)

## SMART-1 APPLIANCES

Component	Smart-1 3050	Smart-1 3150
<b>Managed Gateways</b>	50	150+
<b>Maximum Domains</b>	50	200

### CONTACT US

**Worldwide Headquarters** | 5 Ha'Solelim Street, Tel Aviv 67897, Israel | Tel: 972-3-753-4555 | Fax: 972-3-624-1100 | Email: info@checkpoint.com  
**U.S. Headquarters** | 959 Skyway Road, Suite 300, San Carlos, CA 94070 | Tel: 800-429-4391; 650-628-2000 | Fax: 650-654-4233 | www.checkpoint.com