



CHECK POINT + LIGHTCYBER ADVANCED THREAT PROTECTION

Benefits

- Detect and remediate attacks early in the attack life cycle, and minimize or eliminate damage potential
- Isolate breached computers, stopping attacks at an early stage
- LightCyber Magna and Check Point immediately block access to command & control servers and other malicious hosts to prevent additional computers from getting compromised
- Use the Check Point Security Gateways deployed inside a network to prevent network reconnaissance and lateral movement within an organization

INSIGHTS

Targeted attacks continue to test perimeter and endpoint security measures. Creative and persistent attackers almost always find an attack vector to compromise an endpoint and then use this as a starting point to progress within an organization. Traditional security solutions may be blind to subsequent active attack stages, while the attacker operates freely inside the organization.

SOLUTION

Integrating network traffic and endpoint state with cloud-based threat intelligence, LightCyber Magna accurately detects compromised systems and stolen credentials inside the organization early in the attack lifecycle. This enables joint Check Point and LightCyber customers to rapidly remediate breaches and stop attacks before serious damage is done.

The integration of LightCyber Magna with Check Point Security Gateways expands the Magna breach detection solution with remediation capabilities by leveraging the existing Check Point security infrastructure to isolate compromised endpoints and block identified command and control channels. The combined solution enables joint customers to dramatically reduce attack dwell time and minimize or eliminate related damage.

LightCyber Magna uses Check Point APIs to modify the firewall policy on Check Point Security Gateways. Blocked traffic is uniquely identified in Check Point security events and LightCyber blocking rules are viewable within the Check Point SmartView Monitor application.

WHAT MAKES LIGHTCYBER UNIQUE?

LightCyber Magna Active Breach Detection platform profiles user and device behavior and accurately detects anomalous attack behavior at any time during the active attack lifecycle. Magna employs a unique Multivariate Adaptive Detection methodology that ingests a wide array of data, including full network context (DPI), endpoint state (agentless) and cloud-based threat intelligence. Focusing detection upon attack behavior rather than simple technical artifacts of malware allows Magna to be much more accurate and enables users to rapidly identify and remediate breached devices and user accounts. LightCyber Magna™ delivers a three-step automated methodology, closing the breach detection gap:

Detect

- Behavior-Based Profiling with Multivariate Adaptive Detection
 - Profiles User & Device Behavior Across All Phases of Attack
 - Comprehensive Network-Based (DPI) and Endpoint (agentless) Inputs
 - Detects Anomalous Attack Behavior with Machine Learning
- Automates Attack Detection and Diagnosis Tasks

Validate

- Actionable Alerts for Incident Response (2-5 / Day)
- Associate Malicious Network Behavior and Endpoint State
- Cloud Expert System Leverages Threat Intel to Augment Accuracy

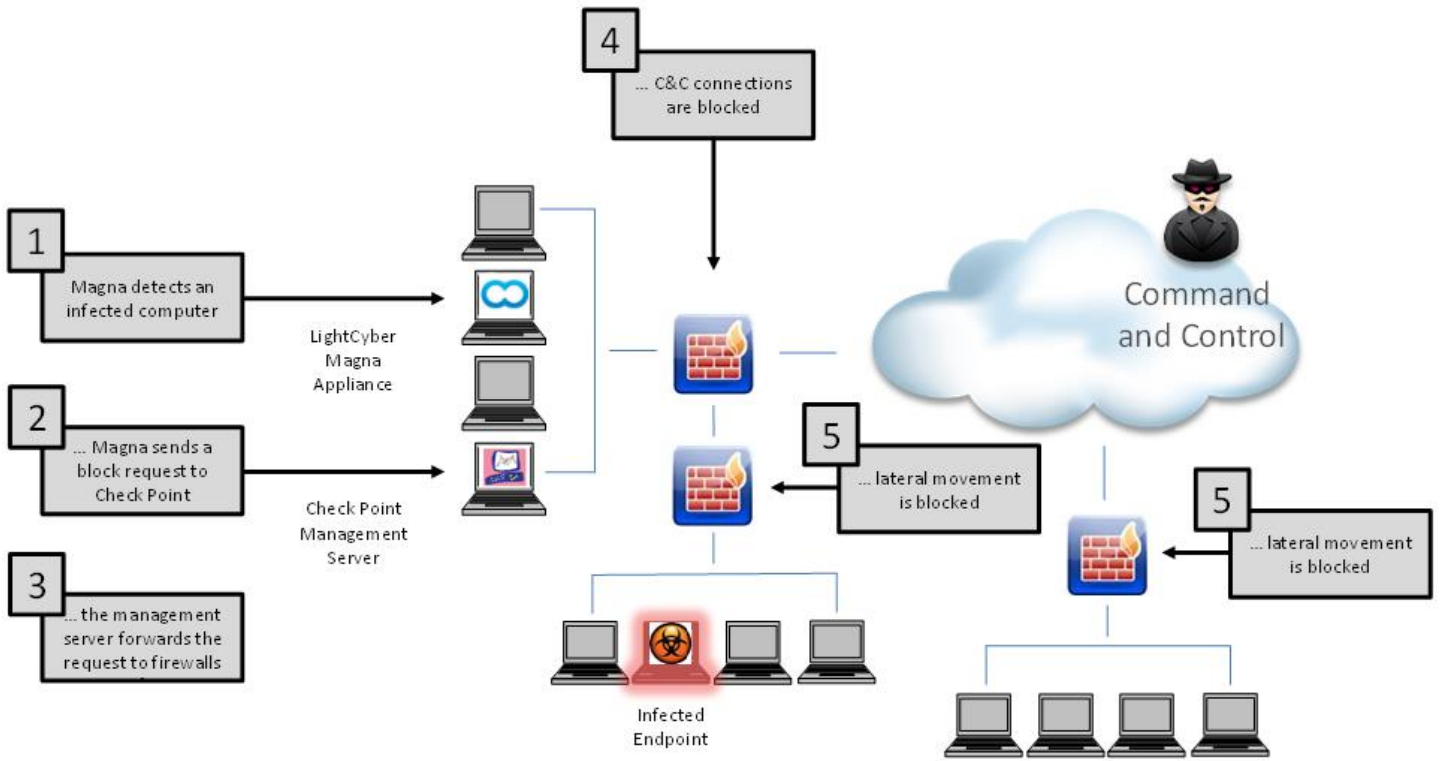
Remediate

- Log Integration with Leading SIEM Platforms
- User / Device Containment via AD & NGFW Platform Integration
- Check Point Software Integration

WHAT MAKES CHECK POINT UNIQUE?

Check Point offers a unified next generation solution that prevents advanced threats and malware attacks and enables an organization to easily and confidently control access to millions of web sites. Protections include stopping application-specific attacks, botnets, targeted attacks, APTs, and zero-day threats.

- Threat Emulation discovers AND prevents sophisticated threats and zero-day attacks with real-time behavioral analysis of malware code even within encrypted communication (SSL and TLS).
- The Threat Emulation cloud service works with your existing infrastructure. There is no need to install any new equipment.
- Reduce operational overhead with a low monthly price for the entire organization, based on incoming file volume.
- A unique agent for exchange server monitors email attachments, even without Check Point infrastructure in the organization.
- Zero false-positives means you can secure the network without stopping the flow of business.
- An integrated Threat Prevention solution including an NSS Recommended Next Generation Firewall, an NSS Recommended IPS, Antivirus and Threat Emulation to prevent infection before they occur and Anti-Bot to contain infected computers.



SUMMARY

The combination of LightCyber Magna and Next-Generation Firewall, IPS, Anti-Bot and Advanced Threat Emulation network security solutions from Check Point allows organizations to quickly identify critical security events and isolate infected computers before significant damage is done.

About Check Point

Check Point Software Technologies Ltd. (www.checkpoint.com), is the largest pure-play security vendor globally, provides industry-leading solutions, and protects customers from cyberattacks with an unmatched catch rate of malware and other types of attacks. Check Point offers a complete security architecture defending enterprises' networks to mobile devices, in addition to the most comprehensive and intuitive security management. Check Point protects over 100,000 organizations of all sizes. At Check Point, we secure the future.

About LightCyber

LightCyber is a leading provider of Active Breach Detection solutions that accurately detect active cyber-attacks that have circumvented traditional threat prevention systems. The LightCyber Magna™ platform is the first security product to simultaneously profile both network traffic and endpoint state in order to accurately detect compromised devices early in the attack lifecycle, and to enable security operators to remediate breaches and stop attacks before real damage is done. Founded in 2011 and led by world-class cyber security experts, the company's products have been successfully deployed by top-tier customers around the world in the financial, legal, telecom, government, media and technology sectors. For more information, please visit www.lightcyber.com or follow us on [Twitter](#), [LinkedIn](#) and [Facebook](#).

CONTACT US

Worldwide Headquarters | 5 Ha'Solelim Street, Tel Aviv 67897, Israel | Tel: 972-3-753-4555 | Fax: 972-3-624-1100 | Email: info@checkpoint.com

U.S. Headquarters | 959 Skyway Road, Suite 300, San Carlos, CA 94070 | Tel: 800-429-4391; 650-628-2000 | Fax: 650-654-4233 | www.checkpoint.com