

SMART-1 SECURITY MANAGEMENT PLATFORM



All-in-one security management solution, with integrated policy management, threat visibility, workflow and orchestration, enabling security consolidation across any IT environment.



All-in-one Security Management

Industry leading Gold Standard platform for consolidated security management



Full Threat Visibility

Single visual dashboard fully integrated with logging, monitoring and event analysis



Enterprise-Ready Scalability

Centrally Manage 1 to 5,000 High-Performance Gateways

Smart-1
405 | 410 | 625 | 5050 | 5150



Smart-1

405 | 410 | 625 | 5050 | 5150

R80.x | SmartEvent | Compliance | Workflow | Multi-domain Management | Automation

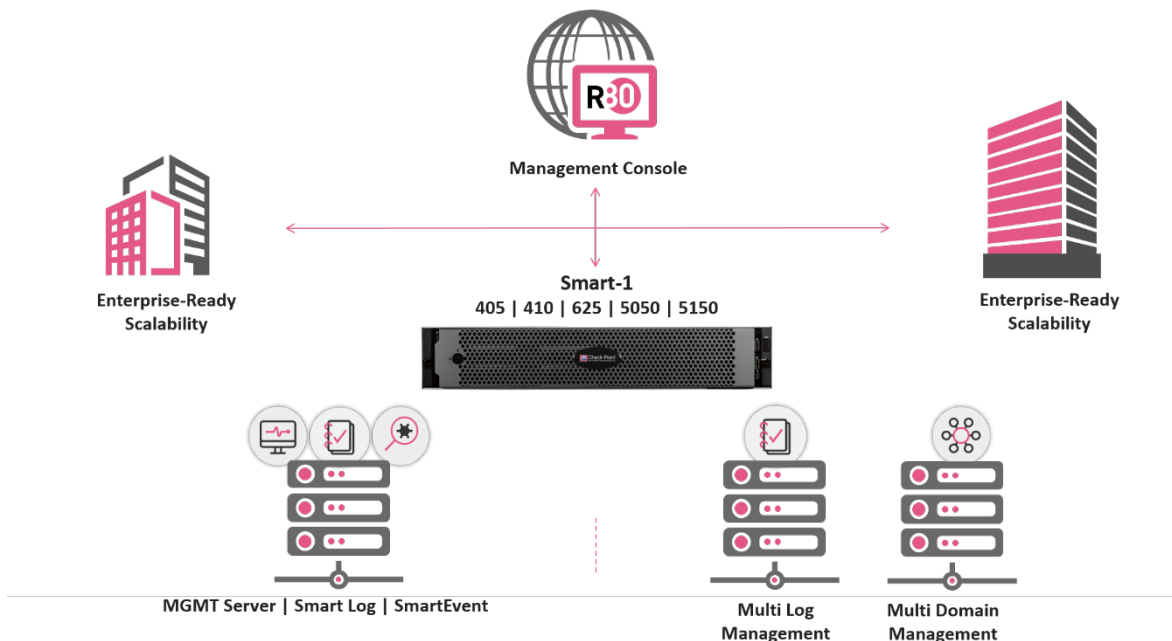
Growing networks, disruptive technologies, and the proliferation of interconnected devices demand a new approach to managing security. Check Point Infinity architecture consolidates management of multiple security layers, providing superior policy efficiency and enabling you to manage security through a single pane of glass. The single management centrally correlates all types of events across all network environments, cloud services and mobile infrastructures.

The Smart-1 405 | 410 | 625 | 5050 | 5150 dedicated appliances are optimized for performance and scalability with both HW and OS hardened from the core.

Smart-1 security management platforms double management capacity and boost performance, increasing security efficiency.

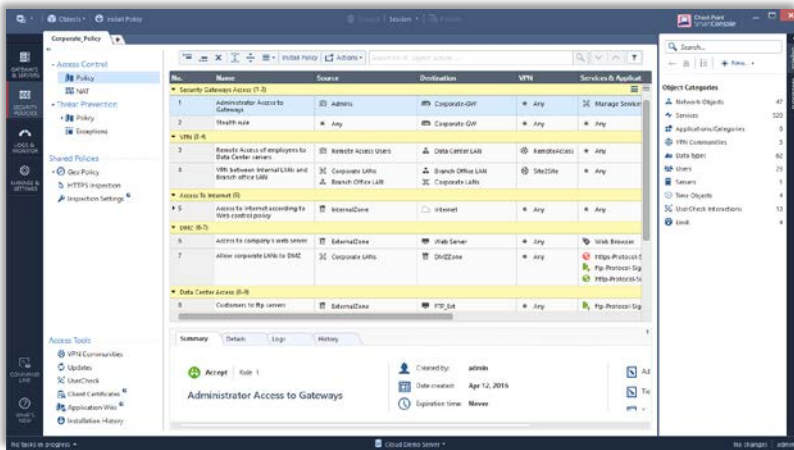
Key Features & Benefits

- Policy Management..... Unify network and cloud policy in a single pane of glass
- Integrated Threat Management..... Real-time forensic and event investigation, compliance, and reporting
- Data Storage and Performance..... Manage thousands of objects and rules and millions of events



YOU DESERVE THE BEST SECURITY

SPOTLIGHT

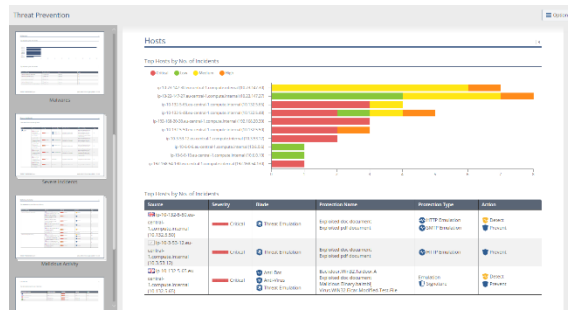


Unified Console to Manage Everything
 With one console, security teams can manage all aspects of security from policy to threat prevention – across the entire organization – on both physical and virtual environments. Consolidated management means increased operational efficiency.

In addition to a unified console, you also now have a unified policy to manage everything from users to data to gateways. Access, controlled in one policy.

Reports & Compliance

Take control and monitor all your gateways in real time. Easily generate and schedule reports. Over 300 Security Best Practices, regulatory compliance checks.

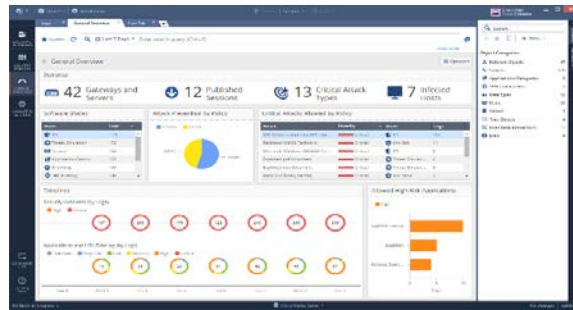


Real Time Integrated Threat Management

For deep forensic analysis, we've integrated logging, monitoring, events, governance and compliance. R80.x SmartConsole gives you full visibility and control across your network.

Security Efficient Operations and APIs

Improve productivity with automation API that orchestrates workflows and aligns security with IT processes and systems.



Multi-domain Management

Easily manage hundreds of private networks within the same infrastructure and create up to 200 domains based on geography, business unit or security function.

Modular and Scalable


Manage thousands of simultaneous sources, thousands of rules and millions of transactions with up to 8x the data storage and performance on a single machine.

Modular platform supporting up to 24 cores, 256GB RAM and 48TB of storage for any deployment environment.



YOU DESERVE THE BEST SECURITY

SPECIFICATIONS

Enterprise Grade				Ultra High End	
Appliances	405	410	625	5050	5150
					
Capacity & Performance					
Managed Gateways	5	10	25	50 ¹	150+ ¹
Maximum Domains (Multi-Domain Management)	-	-	-	50	200
Peak Logs per Sec	40,000	45,000	60,000	80,000 ³	100,000 ³
Peak Indexed Logs per Sec	6,000/400 ²	10,000/600 ²	19,000/2,400 ²	27,000 ³ /7,500 ²	40,000 ³ /12,000 ²
Sustained Indexed Logs per Sec	3,000/200 ²	5,000/300 ²	10,000/1,200 ²	15,000 ³ /3,750 ²	22,000 ³ /6,000 ²
GB per Day of Logs	88/0.36 ²	147/0.55 ²	293/2.25 ²	440/6.8 ²	645/11 ²
Hardware Specifications					
Cores	4	4	6	16	24
Storage (HDD) Hot-Swappable	1x 1 TB	1x 2 TB	2x 4 TB	4x 4 TB	up to 12x 4TB (default 6x 4TB)
RAID Type	-	-	1	5, 10	5, 6, 10, 50, 60
Memory (RAM) Default/Max	16 GB	32 GB	32/64 GB	64/128 GB	128/256 GB
Interfaces					
Default Network Interfaces	5x Copper GbE	5x Copper GbE	4x Copper GbE	4x Copper GbE	4x Copper GbE
Extended Network Interfaces	-	-	Optional	Optional	Optional
Console Port	1x RJ45	1x RJ45	1x DB9 ⁴	1x DB9 ⁴	1x DB9 ⁴
USB Ports	2	2	3	4	4
LOM (iDRAC) ⁵				✓	✓
Physical					
Enclosure	1U	1U	1U	1U	2U
Standard (W x D x H)	17.13 x 17.64 x 1.63 in.		17.1 x 23.5 x 1.68 in.	17.08 x 27.74 x 1.68 in.	17.08 x 28.17 x 3.42 in.
Metric (W x D x H)	435 x 448 x 44 mm		434 x 595.6 x 42.8 mm	434 x 704.7 x 42.8 mm	434 x 715.5 x 86.8 mm
Weight	7.7kg (16.9 lbs.)		13.6kg (29.9lbs.)	21.1kg (46.5lbs.)	28.6kg (63.1lbs.)
Power					
Dual, Hot-Swappable PSU	No	No	Yes	Yes	Yes
Dual, Hot-Swappable DC PSU	No	No	No	Optional	Optional
Power Input	AC 100 ~ 240V@ 50 ~ 60Hz				
Power Supply Spec (max)	250W	250W	350W	495W	750W
Environment Conditions					
Operating Environment	32° to 104° F / 0° to 40° C, 5~90% Humidity (non-condensing)		50 ° to 95 ° F / 10° to 35° C, 10~80% Humidity		
Storage Environment	-40° to 158° F / -40° to 70° C, 5~95% Humidity (non-condensing)		-40 ° to 149 ° F / -40° to 65° C, 5~95% Humidity		
Certifications					
Safety/Emissions/Environment	UL / CE, FCC Class A / RoHS				

1 Manages up to five thousand 1400 or 1500 security gateway when divided into multiple domains using MDM or using SmartProvisioning

2 SmartEvent configuration

3 In Multi-Domain configuration

4 DB9 to RJ-45 adapter included

5 See [sk122914](#) for the iDRAC supported features

ORDERING SMART-1 APPLIANCES

Smart-1 Appliances ¹	SKU
Smart-1 405	
Smart -1 405 Appliance NG Security Management for 5 gateways (SmartEvent & Compliance 1 year)	CPAP-NGSM405
Smart -1 405 Appliance, dedicated SmartEvent for 5 gateways (perpetual)	CPAP-NGSM405-EVNT
Smart-1 410	
Smart -1 410 Appliance NG Security Management for 10 gateways (SmartEvent & Compliance 1 year)	CPAP-NGSM410
Smart -1 410 Appliance, dedicated SmartEvent for 10 gateways (perpetual)	CPAP-NGSM410-EVNT
Smart-1 625	
Smart-1 625 Appliance NG Security Management for 25 gateways (SmartEvent & Compliance 1 year)	CPAP-NGSM625
Smart-1 625 Appliance, dedicated SmartEvent for 25 gateways (perpetual)	CPAP-NGSM625-EVNT
Smart-1 5050	
Smart-1 5050 Appliance NG Security Management for 50 gateways (SmartEvent & Compliance 1 year)	CPAP-NGSM5050
Smart-1 5050 Appliance NG MDM for 50 gateways, 5 domains (SmartEvent & Compliance 1 year)	CPAP-NGSM5050-MD5
Smart-1 5050 Appliance, dedicated SmartEvent for 50 gateways (perpetual)	CPAP-NGSM5050-EVNT
Smart-1 5050 Appliance, dedicated Multi-Log Manager for 50 gateways and 10 domains	CPAP-NGSM5050-MLOG10
Smart-1 5150	
Smart-1 5150 Appliance NG Security Management for 150 gateways (SmartEvent & Compliance 1 year)	CPAP-NGSM5150
Smart-1 5150 Appliance NG MDM for 150 gateways and 5 domains (SmartEvent & Compliance 1 year)	CPAP-NGSM5150-MD5
Smart-1 5150 Appliance, dedicated SmartEvent for 150 gateways (perpetual)	CPAP-NGSM5150-EVNT
Smart-1 5150 Appliance, dedicated Multi-Log Manager for 150 gateways and 10 domains	CPAP-NGSM5150-MLOG10

¹ SmartEvent and Compliance for one year, extension SKUs are available

Smart-1 5150, Smart-1 5050 Accessories	
Interface Cards and Transceivers	SKU
Storage Area Network (SAN) Interface expansion card for Smart-1 5050/5150	CPAC-SAN-SM5050/5150
2 Port 10GBase-F SFP+ interface card for Smart-1. Requires 10GBase SFP+ transceiver per port.	CPAC-2-10F-SM-C
SFP+ transceiver for 10G fiber ports - short range (10GBase-SR)	CPAC-TR-10SR-C
SFP+ transceiver for 10G fiber ports - long range (10GBase-LR)	CPAC-TR-10LR-C
2 Port 1GBase-F SFP interface card. Requires an additional 1GBase SFP transceiver per port.	CPAC-2-1F-SM-C
SFP transceiver for 1000 Base-T RJ45 (Copper)	CPAC-TR-1T-C
SFP transceiver for 1G fiber ports - short range (1000Base-SX)	CPAC-TR-1SX-C
SFP transceiver for 1G fiber ports - long range (1000Base-LX)	CPAC-TR-1LX-C
Hardware Expansion	
Memory upgrade kit from 64GB to 128GB for Smart-1 5050 management appliance	CPAC-RAM64GB-SM5050
Memory upgrade kit from 128GB to 256GB for Smart-1 5150 management appliance	CPAC-RAM128GB-SM5150
Additional/Replacement 4TB Hard Drive for Smart-1 5050 and Smart-1 5150 appliances	CPAC-HDD-4TB-SM5050/5150
Spares, Replacements and Rails	
Replacement AC Power Supply for Smart-1 5050 management appliance	CPAC-PSU-AC-SM5050
Replacement AC Power Supply for Smart-1 5150 management appliance	CPAC-PSU-AC-SM5150
Dual DC power supplies for Smart -1 5050/5150 management appliances	CPAC-PSU-DC-Dual-SM5050/5150
Slide RAILS for Smart-1 525/5050 Smart-1 appliances (24 inch-36 inch)	CPAC-RAILS-SM525/5050
Slide RAILS for Smart-1 5150 management appliance (24 inch-36 inch)	CPAC-RAILS-SM5150

ORDERING SMART-1 APPLIANCES (continued)

Smart-1 625 Accessories	
Interface Cards and Transceivers	SKU
2 Port 10GBase-F SFP+ interface card for Smart-1. Requires 10GBase SFP+ transceiver per port.	CPAC-2-10F-SM-C
SFP+ transceiver for 10G fiber ports - short range (10GBase-SR)	CPAC-TR-10SR-C
SFP+ transceiver for 10G fiber ports - long range (10GBase-LR)	CPAC-TR-10LR-C
2 Port 1GBase-F SFP interface card. Requires an additional 1GBase SFP transceiver per port.	CPAC-2-1F-SM-C
SFP transceiver for 1G fiber ports - short range (1000Base-SX)	CPAC-TR-1SX-C
SFP transceiver for 1G fiber ports - long range (1000Base-LX)	CPAC-TR-1LX-C
Hardware Expansion	
64GB RAM (replace) for Smart-1 625 management appliance	CPAC-RAM64GB-SM625
Additional/Replacement 4TB Hard Drive for Smart-1 625 appliance	CPAC-HDD-4TB-SM625
Spares, Replacements and Rails	
Replacement AC Power Supply for Smart-1 625 management appliance	CPAC-PSU-AC-SM625
Slide RAILS for Smart-1 625 Smart-1 appliances (24 inch-36 inch)	CPAC-RAILS-SM625
Smart-1 410, Smart-1 405 Accessories	
Spares, Replacements and Rails	
Slide RAILS for Smart-1 405, 410 management appliances (22 inch-32 inch)	CPAC-RAILS-5000
Extended slide RAILS for Smart-1 405, 410 management appliances (26 inch-36 inch)	CPAC-RAILS-EXT-5000