



SmartEvent: Full Threat Visibility Data Sheet

YOU DESERVE THE BEST SECURITY

SmartEvent provides Full Threat Visibility with a single view into security risks. Take control and command the security event through real-time forensic and event investigation, compliance, and reporting. Respond to security incidents immediately to prevent the next attack.

SmartEvent: Full Threat Visibility

Key Features and Benefits

Instant Search Results:

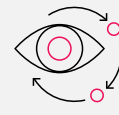
Free text search, auto suggestion and search history favorites

Single View into Security Risk:

R81/R82 integrated threat management and performance

Customizable Views and Reports:

Security events automatically alert on critical events



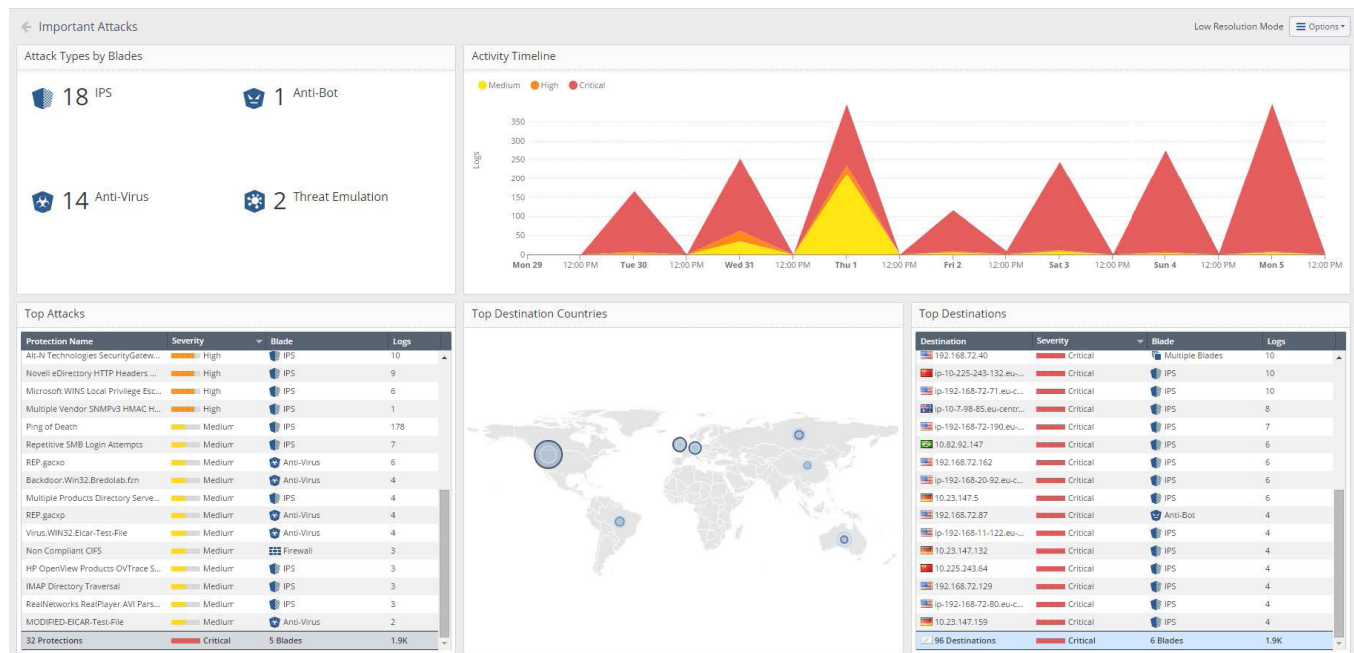
Full
Threat
Visibility



Real-Time
Forensic
and Event
Investigation



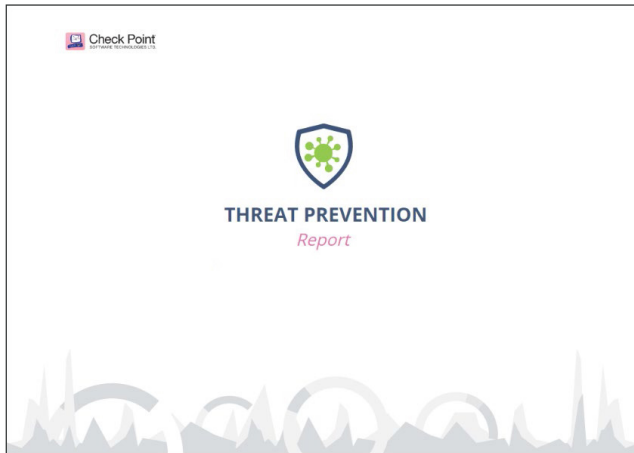
Command
the Security
Event



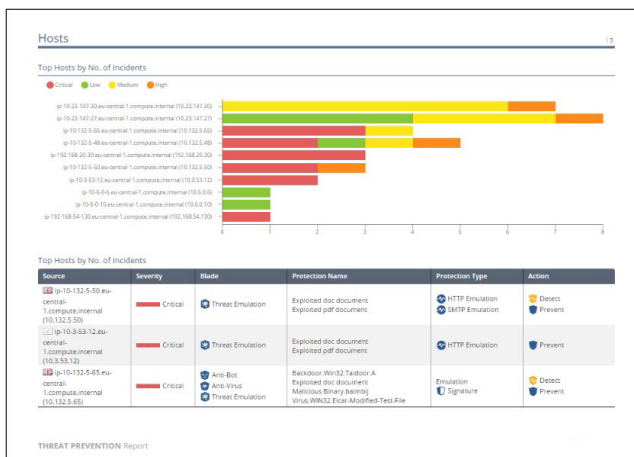
"Check Point Solutions prevent threats of all kinds when users unknowingly access malicious resources, completely eliminating the very possibility of damage or data breach. Check Point products stood out among the competitors for their ease of configuration, a user-friendly interface and the ability to prevent threats from entering the network."

Sergey Rysin, Security Advisor to STLC Director

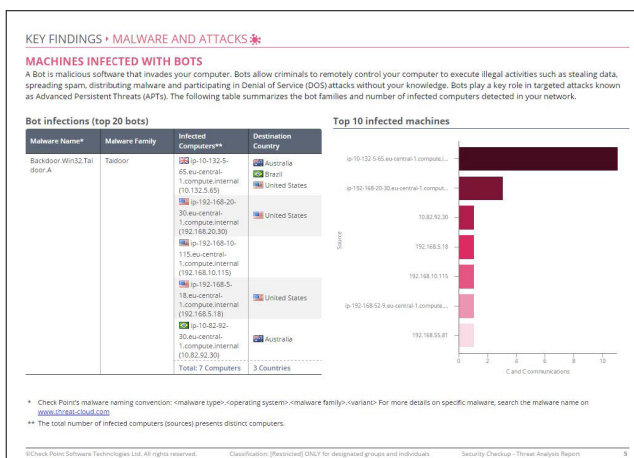
TOP TIER REPORTING



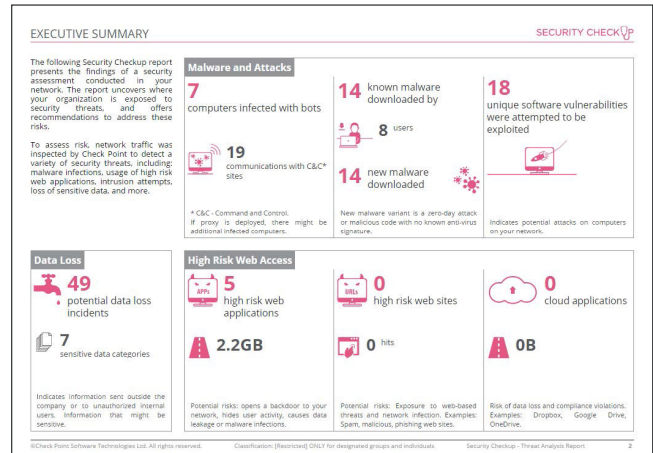
Threat Prevention



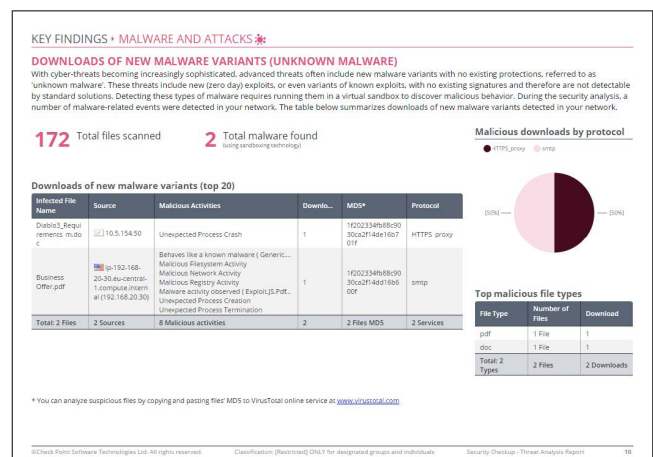
Hosts



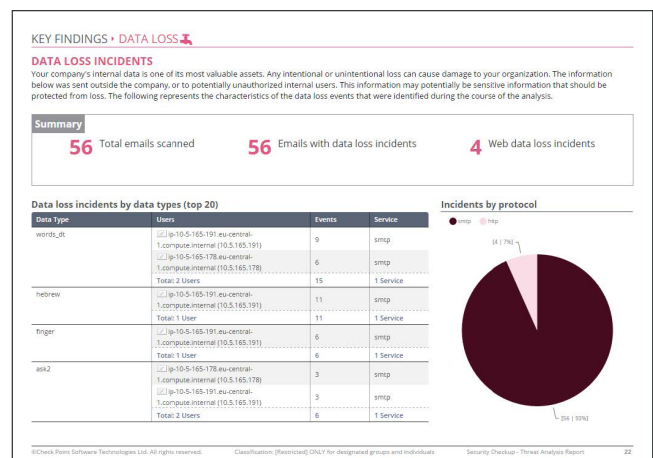
Machines Infected with Bots



Executive Summary



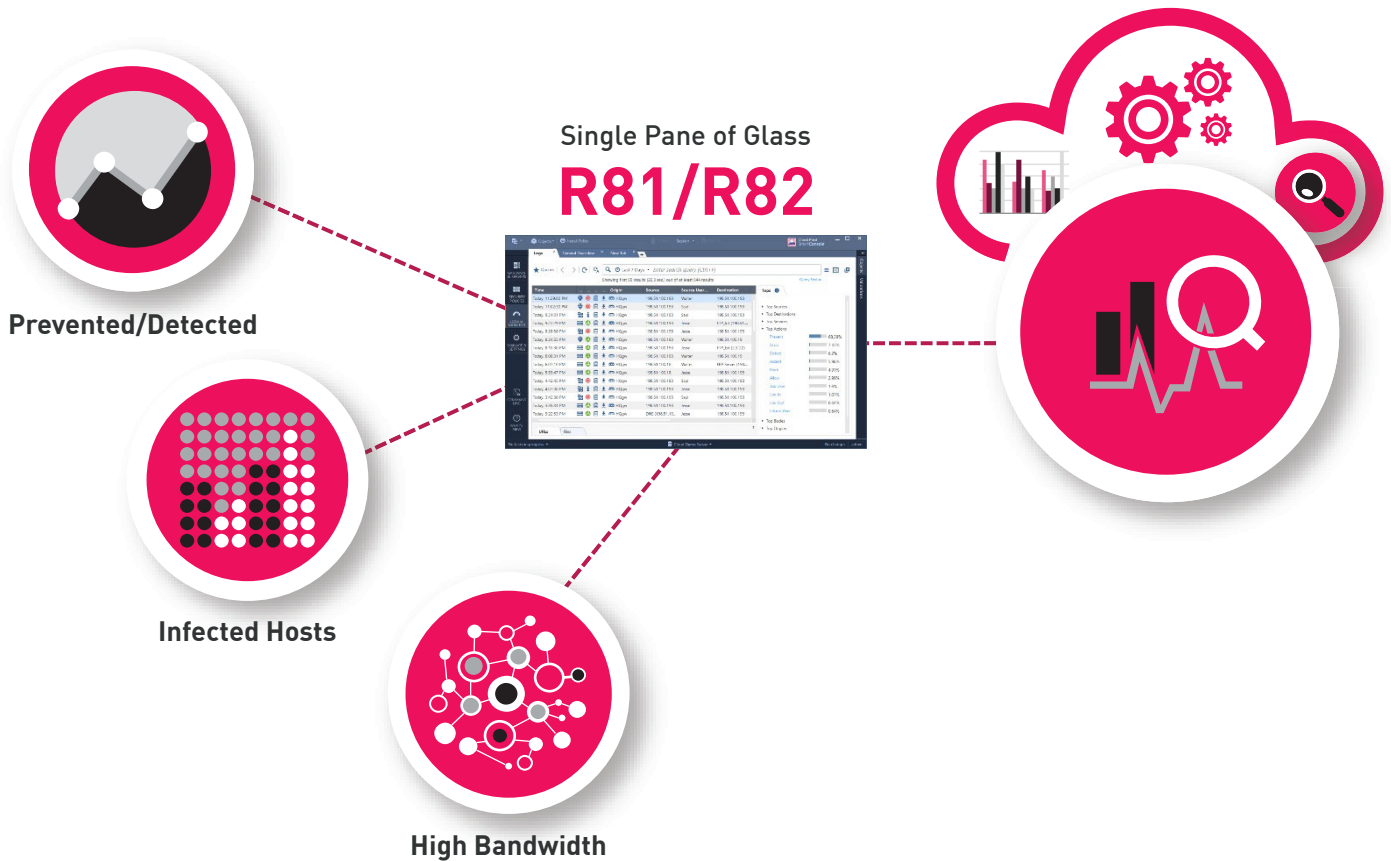
Malwares and Attacks



Key Findings: Data Loss

CORRELATION

REAL-TIME FORENSIC AND EVENT INVESTIGATION



- SmartEvent correlates logs from all Check Point enforcement points, including endpoints, to identify suspicious activity, track trends and investigate/mitigate events – all through a single plane of glass.
- Real-time data analysis and custom event logs immediately notify administrators to allow for quick action and/or remediation. Take control of your security.
- Deploys quickly and monitors anywhere, SmartEvent is completely modular and customizable. Consisting of widgets, views and reports you can create your own or use any Check Point predefined reports.

ORDERING DEDICATED SMART-1 SMARTEVENT APPLIANCES

Smart-1 Appliances¹		SKU
Smart-1 600-S		
Smart-1 600-S Base SmartEvent appliance for 5 gateways (perpetual)		CPAP-NGSM600S-BASE-EVNT
Smart-1 600-S Plus SmartEvent dedicated appliance for 10 gateways (perpetual) including SmartEvent, SmartEvent		CPAP-NGSM600S-PLUS-EVNT
Smart-1 600-M		
Smart-1 600-M Base SmartEvent dedicated appliance for 25 gateways (perpetual)		CPAP-NGSM600M-BASE-EVNT
Smart-1 600-M Plus SmartEvent dedicated appliance for 50 gateways (perpetual)		CPAP-NGSM600M-PLUS-EVNT
Smart-1 6000-L		
Smart-1 6000-L Base SmartEvent appliance for 75 gateways (perpetual), 96 GB RAM, 24 TB HDD, 2x AC PSUs, LOM		CPAP-NGSM6000L-BASE-EVNT
Smart-1 6000-L Base Multi-Log appliance for 75 gateways and 10 domains (perpetual), 96 GB RAM, 24 TB HDD, 2x AC PSUs, LOM		CPAP-NGSM6000L-BASE-MLOG-10
Smart-1 6000-L Plus SmartEvent appliance for 150 gateways (perpetual), 192 GB RAM, 24 TB HDD, 2x AC PSUs, LOM		CPAP-NGSM6000L-PLUS-EVNT
Smart-1 6000-L Plus Multi-Log appliance for 150 gateways and 10 domains (perpetual), 192 GB RAM, 24 TB HDD, 2x AC PSUs, LOM		CPAP-NGSM6000L-PLUS-MLOG-10
Smart-1 6000-XL		
Smart-1 6000-XL Base appliance SmartEvent for 200 Gateways (perpetual), 192 GB RAM, 24 TB SSD, 2x AC PSUs, LOM		CPAP-NGSM6000XL-BASE-EVNT
Smart-1 6000-XL Base Multi-Log appliance for 200 Gateways and 10 domains (perpetual), 192 GB RAM, 24 TB SSD, 2x AC PSUs, LOM		CPAP-NGSM6000XL-BASE-MLOG10
Smart-1 6000-XL Plus SmartEvent appliance for 400 gateways (perpetual), 384 GB RAM, 24 TB SSD, 2x AC PSUs, LOM		CPAP-NGSM6000XL-PLUS-EVNT
Smart-1 6000-XL Plus Multi-Log appliance for 400 gateways and 10 domains (perpetual), 384 GB RAM, 24 TB SSD, 2x AC PSUs, LOM		CPAP-NGSM6000XL-PLUS-MLOG10




1. SmartEvent for one year and extensions are available in the integrated Smart-1 Appliance policy management SKUs.

SmartEvent perpetual dedicated server, for customers who want a dedicated SmartEvent environment.

- Includes SmartEvent, Logs and correlation unit.
- Perpetual on Smart-1 and open servers
- The dedicated SmartEvent server is licensed by the number of gateways it is analyzing logs from.
- Number of managed gateways on the dedicated SmartEvent server may be to equal or less than the number of managed gateways on the Security Management server.

SPECIFICATIONS

Smart-1 SmartEvent Configuration

	Enterprise Grade		Ultra High End	
Appliances	600-S	600-M	6000-L	6000-XL
				
Capacity & Performance				
Managed Gateways	5/10	25/50	75/150	200/400 ¹
Peak Indexed Logs per Sec	6,000 ²	8,000 ²	40,000 ²	67,500 ²
Sustained Indexed Logs per Sec	2,000 ²	4,000 ²	23,000 ²	40,000 ²
GB per Day of Logs	50 ²	105 ²	38 ²	65 ²
Hardware Specifications				
Cores	6	12	16	32
Storage (HDD) Hot-Swappable	1x 2TB HDD	2x 4TB HDD	up to 12x 4TB HDD	up to 12x 4TB SSD
RAID Type	-	1	5, 6, 10, 50, 60 (5, 6, 50 for 6 disks)	5, 6, 10, 50, 60 (5, 6, 50 for 6 disks)
Memory (RAM) Default/Max	16/32 GB	32/64 GB	96/192 GB	192/384 GB

1. Manages up to 5000 Check Point 1500, 1600, 1800 firewalls when divided into multiple domains using MDM or using SmartProvisioning
2. 600-S and 600-M tested with SmartLog and SmartEvent configuration, 6000-L/6000-XL tested with dedicated SmartEvent configuration

Worldwide Headquarters

5 Shlomo Kaplan Street, Tel Aviv 6789159, Israel | Tel: +972-3-753-4599

U.S. Headquarters

100 Oracle Parkway, Suite 800, Redwood City, CA 94065 | Tel: 1-800-429-4391

www.checkpoint.com