



# Swiss IT Service Provider Uses Check Point to Protect New Data Centers and Maintain Strict Customer SLAs

Check Point Quantum Security Gateway enables Wagner AG to flex customer loads across locations with advanced network protection and centralized security management

## INDUSTRY

Information Technology  
& Services

## HEADQUARTERS

Kirchberg, Bern, Switzerland

## COMPANY SIZE

51-200 employees



## OVERVIEW

Wagner AG is a provider of IT services that is based in Switzerland. It has customers in a range of market sectors, including financial, food, and healthcare. The business was founded in 1996 and has over 100 employees.

## OUR SOLUTION



## CHALLENGE

Wagner AG provides managed IT services to corporate customers in Switzerland. As businesses look to outsource their IT to a specialist, reducing management complexity and stabilizing costs, Wagner AG drew up plans for two new data centers. Located 120kms apart with two 40GB connections, the investment would provide room to grow and strengthen redundancy.

“This was a sizeable, strategic investment, built from the ground up,” says Thomas Eltschinger, Head of Managed Backend Services, Wagner AG. “We wanted to incorporate the latest technology. As we’re delivering



What we appreciate most about Check Point Security Management is the clear and simplified administration of our policies. Being able to administrate policies by several users simultaneously makes daily work much easier.

*Thomas Eltschinger, Head of Managed Backend Services, Wagner AG*



managed services with strict SLAs, we needed clustered firewalls at both locations.

“We want to be able to offer our customers the best possible protection with today’s modern options. We can do this with the various blades and the flexible license model of Check Point.”

## SOLUTION

The Check Point Quantum Security Gateway combines the most comprehensive security protection with data center grade hardware to maximize uptime while safeguarding enterprise and data center networks. The solution ensures high-performance protection against the most advanced cyber attacks.

Eltschinger says the Check Point solution offered the best fit in terms of features and enables the business to meet industry compliance in terms of security and traceability. Check Point Quantum Security Gateway offers unique ‘first-time prevention’ for the most sophisticated zero day attacks. It is optimized for inspecting SSL encrypted traffic, and its centralized management control and Lights Out Management (LOM) improves serviceability. It is also modular and can be expanded if necessary.

In addition, Check Point Security Management provides fully integrated visibility and clearer security insights. The Check Point Security Management console allows Wagner AG to create unified policies for all network and cloud environments, all managed centrally.

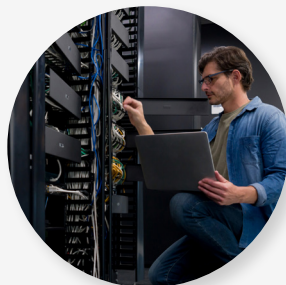
“Automation and API options are useful features in Check Point Security Management,” says Eltschinger.

“We’re standardizing our customer environments, which means the existing API becomes more important for automation. The TCO becomes smaller, and costs can be saved.”

## OUTCOME

“Implementation went smoothly. It was done manually, working through all the old rules, creating new ones, and cleaning things up. We didn’t want to bring across any unwanted security rules from old devices,” says Eltschinger.

Eltschinger further explains that the implementation was done alongside their Check Point partner, BNC Business Network Communications AG, and any issues were quickly resolved: “The documentation and



“The cluster functionality of the Check Point solution fits very well with other network components. It is a definite advantage.

*Thomas Eltschinger, Head of Managed Backend Services, Wagner AG*

”

Secure Knowledge on the Check Point site is excellent. It was simple to find answers to any technical questions.”

Today, the two data centers house around 50 Wagner AG customers, with up to 3,000 users and 5,000 different firewall objects. “The fact that I can have these objects run in either location means we can spread the load evenly. We can connect customers by geography but still retain latency and redundancy,” says Eltschinger. “The cluster functionality of the Check Point solution fits very well with other network components. It is a definite advantage.

“However, what we appreciate most about Check Point Security Management is the clear and simplified administration of our policies. Being able to administrate policies by several users simultaneously makes daily work much easier.

“Feedback from customers,” he adds, “has been positive. Everything is running smoothly, which wasn’t the case with the old solution.”

Eltschinger explains that Wagner’s plan is to Zero Day Threat Prevention for Quantum by the end of 2018.

“The ultimate aim is to have no malware on the network, to allow things onto the network unhindered, and to catch problems as close to the entry point as possible. The Check Point Zero Day Threat Prevention for Quantum function offers that.”

“



The documentation and Secure Knowledge on the Check Point site is excellent. It was simple to find answers to any technical questions.

*Thomas Eltschinger, Head of Managed Backend Services, Wagner AG*

”

## ABOUT CHECK POINT

Check Point Software Technologies Ltd. ([www.checkpoint.com](https://www.checkpoint.com)) is a leading AI-powered, cloud-delivered cyber security platform provider protecting over 100,000 organizations worldwide. Check Point leverages the power of AI everywhere to enhance cyber security efficiency and accuracy through its Infinity Platform, with industry-leading catch rates enabling proactive threat anticipation and smarter, faster response times. The comprehensive platform includes cloud-delivered technologies consisting of Check Point Harmony to secure the workspace, Check Point CloudGuard to secure the cloud, Check Point Quantum to secure the network, and Check Point Infinity Platform Services for collaborative security operations and services.

[LEARN MORE](#)

### Worldwide Headquarters

5 Shlomo Kaplan Street, Tel Aviv 6789159, Israel | Tel: +972-3-753-4599

### U.S. Headquarters

100 Oracle Parkway, Suite 800, Redwood City, CA 94065

[www.checkpoint.com](https://www.checkpoint.com)

