

# QUANTUM 6800 SECURITY GATEWAY



 **End Of Sale**  
December 31st 2020

**Check Point Quantum 6800 Next Generation Firewalls** enables enterprises to deploy the industry’s leading threat prevention capabilities at all points of their infrastructure, scaling security almost infinitely according to their changing business needs. It also dramatically accelerates the efficiency of their security operations. This enables enterprises to prevent and block even the most advanced attacks, before they can disrupt business.



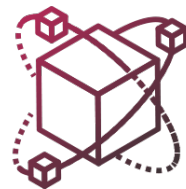
## Always Protected against Gen V

Highest caliber prevention with unified security



## Security at Hyperscale

On-demand expansion with hyperscalability



## Efficient Operations

Cut operation management time by up to 80%

## PERFORMANCE HIGHLIGHTS

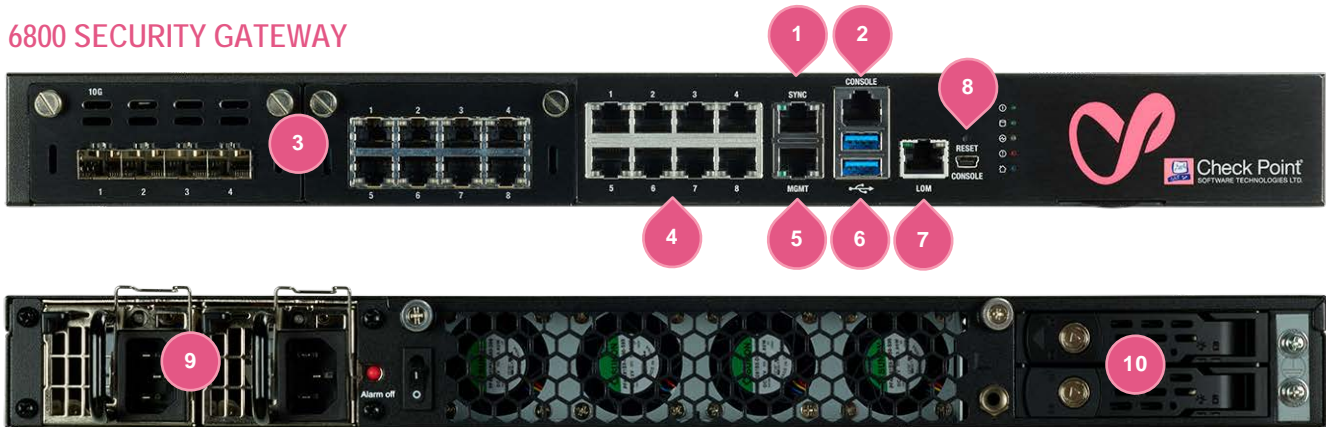
Gen II Security Firewall	Gen III Security NGFW <sup>1</sup>	Gen V Security Threat Prevention + SandBlast <sup>2</sup>
42 Gbps	15 Gbps	8.9 Gbps

Performance measured with an enterprise testing conditions. Additional performance details on page 3. 1: Includes Firewall, Application Control, and IPS. 2: Includes Firewall, Application Control, URL Filtering, IPS, Antivirus, Anti-Bot and SandBlast Zero-Day Protection.

WELCOME TO THE FUTURE OF CYBER SECURITY

## SPOTLIGHT

### 6800 SECURITY GATEWAY



- |                                       |                                      |
|---------------------------------------|--------------------------------------|
| 1. Sync 10/100/1000 Base-T port       | 6. 2x USB 3.0 ports                  |
| 2. RJ45 console port                  | 7. Lights-out Management port        |
| 3. 2x network card expansion slots    | 8. USB Type-C console port           |
| 4. 8x 10/100/1000 Base-T ports        | 9. Redundant hot-swap power supplies |
| 5. Management 10/100/1000 Base-T port | 10. 2x 480GB SSD RAID1               |

#### Prevent Known and Zero-day Threats

Check Point SandBlast Network is an evasion-resistant sandbox that provides zero-day protection from advanced and unknown threats. SandBlast Threat Extraction (CDR) ensures quick delivery of safe email and web content to users.

	NGFW	NGTP	SNBT
Firewall, VPN, Mobile Access	✓	✓	✓
Content Awareness	✓	✓	✓
Application Control	✓	✓	✓
Intrusion Prevention System	✓	✓	✓
URL Filtering		✓	✓
Antivirus and Anti-Bot		✓	✓
Threat Emulation (sandboxing)			✓
Threat Extraction (CDR)			✓

*Next Generation Firewall, Next Generation Threat Prevention and Threat Prevention + SandBlast packages*

#### All-inclusive Security Solutions

Check Point 6800 security gateways include all security technologies including the SandBlast (sandboxing) software package for one year. Purchase a renewal for NGFW, NGTP or SandBlast (SNBT) for subsequent years as you like.

#### Flexible I/O Options

The 6800 Turbo configuration includes 10 on-board 1 GbE copper ports and one 4x 10 Gb SFP+ interface card. Or add additional I/O as you like in the two expansion slots; 8x 1GbE copper, 4x 1GbE fiber or 4x 10GbE SFP+.



#### Remote Management and Monitoring

A Lights-Out Management (LOM) card provides out-of-band management to remotely diagnose, start, restart and manage the appliance from a remote location. Also use LOM for remote installs of the GAIa OS.

## ENTERPRISE-GRADE PLATFORM

	1 GbE (copper)	1 GbE (fiber)	10 GbE	40 GbE	Memory	Redundant Storage	Redundant Power	LOM
Turbo model	10	0	4	0	32 GB	●	●	●
Maximum capacity	26	8	8	4	64 GB	●	●	●

WELCOME TO THE FUTURE OF CYBER SECURITY

## SPECIFICATIONS

### Performance

Enterprise Test Conditions	
	Turbo
Threat Prevention <sup>1</sup> (Gbps)	8.9
NGFW <sup>2</sup> (Gbps)	15
IPS (Gbps)	20
Firewall (Gbps)	42
RFC 3511, 2544, 2647, 1242 PERFORMANCE (LAB)	
Firewall 1518B UDP (Gbps)	50
VPN AES-128 (Gbps)	10.4
Connections/sec	300,000
Concurrent connections <sup>3</sup>	8/16M

1: Includes Firewall, Application Control, URL Filtering, IPS, Antivirus, Anti-Bot and SandBlast

Zero-Day Protection. 2: Includes Firewall, Application Control and IPS. 3: Performance measured with default/maximum memory.

### Additional Features

#### Highlights

- 1x CPU, 10x physical cores, 20x virtual cores (total)
- 2x 480 GB SSD RAID1 storage
- 2 redundant AC power supplies, DC PSU option
- 32 GB memory, 64 GB option
- Lights-Out Management card is Included
- Virtual Systems (default/max mem): 20/30

#### Network Expansion Slot Options (2 of 2 slots open)

- 8x 10/100/1000Base-T RJ45 port card, up to 26 ports
- 4x 1000Base-F SFP port card, up to 8 ports
- 4x 10GBase-F SFP+ port card, up to 8 ports
- 2x 40GBase-F QSFP+ port card, up to 4 ports

### Content Security

#### First Time Prevention Capabilities

- CPU-level, OS-level and static file analysis
- File disarm and reconstruction via Threat Extraction
- Average emulation time for unknown files that require full sandbox evaluation is under 100 seconds
- Maximal file size for Emulation is 100 MB
- Emulation OS Support: Windows XP, 7, 8.1, 10

#### Applications

- Use 8,000+ pre-defined or customize your own applications
- Accept, prevent, schedule, and apply traffic-shaping

#### Data Loss Prevention

- Classify 700+ pre-defined data types
- End user and data owner incident handling

### Content Security (continued)

#### Dynamic User-based Policy

- Integrates with Microsoft AD, LDAP, RADIUS, Cisco pxGrid, Terminal Servers and with 3<sup>rd</sup> parties via a Web API
- Enforce consistent policy for local and remote users on Windows, macOS, Linux, Android and Apple iOS platforms

### Network

#### Network Connectivity

- Total physical and virtual (VLAN) interfaces per appliance: 1024/4096 (single gateway/with virtual systems)
- 802.3ad passive and active link aggregation
- Layer 2 (transparent) and Layer 3 (routing) mode

#### High Availability

- Active/Active L2, Active/Passive L2 and L3
- Session failover for routing change, device and link failure
- ClusterXL or VRRP

#### IPv6

- NAT66, NAT64, NAT46
- CoreXL, SecureXL, VRRPv3

#### Unicast and Multicast Routing (see sk98226)

- OSPFv2 and v3, BGP, RIP
- Static routes, Multicast routes
- Policy-based routing
- PIM-SM, PIM-SSM, PIM-DM, IGMP v2 and v3

### Physical

#### Power Requirements

- Single Power Supply rating: 500W
- AC power input: 100 to 240V (47-63Hz)
- Power consumption max: 160.1W
- Maximum thermal output: 546.19 BTU/hr.

#### Dimensions

- Enclosure: 1RU
- Dimensions (WxDxH): 17.24 x 20 x 1.73 in. (438 x 508 x 44mm)
- Weight: 22.05 lbs. (10 kg)

#### Environmental Conditions

- Operating: 0° to 40°C, humidity 5% to 95%
- Storage: -20° to 70°C, humidity 5% to 95% at 60°C

#### Certifications

- Safety: UL, CB, CE, TUV GS
- Emissions: FCC, IC, CE, VCCI, RCM/C-Tick
- Environmental: RoHS, WEEE, REACH<sup>1</sup>, ISO14001<sup>1</sup>

<sup>1</sup>. factory certificate

WELCOME TO THE FUTURE OF CYBER SECURITY

## ORDERING 6800 SECURITY GATEWAYS

SECURITY APPLIANCE <sup>1</sup>	SKU
6800 Turbo configuration: includes 10x 1GbE copper ports, 4x 10GbE SFP+ ports, 4x SR transceivers, 32 GB RAM, 2x 480GB SSD, 2x AC PSUs, Lights-Out Management (LOM), SandBlast (SNBT) Security Subscription Package for 1 Year.	CPAP-SG6800-TURBO-SNBT

<sup>1</sup> Renewal NGFW, NGTP and SandBlast (SNBT) packages are available in the online product catalog.

### Accessories

INTERFACE CARDS AND TRANSCEIVERS	
8 Port 10/100/1000 Base-T RJ45 interface card	CPAC-8-1C-C
4 Port 1000Base-F SFP interface card; requires additional 1000Base SFP transceivers	CPAC-4-1F-C
SFP transceiver module for 1G fiber ports - long range (1000Base-LX)	CPAC-TR-1LX-C
SFP transceiver module for 1G fiber ports - short range (1000Base-SX)	CPAC-TR-1SX-C
SFP transceiver to 1000 Base-T RJ45 (Copper)	CPAC-TR-1T-C
4 Port 10GBase-F SFP+ interface card	CPAC-4-10F-6500/6800-C
SFP+ transceiver module for 10G fiber ports - long range (10GBase-LR)	CPAC-TR-10LR-C
SFP+ transceiver module for 10G fiber ports - short range (10GBase-SR)	CPAC-TR-10SR-C
2 Port 40GBase-F QSFP+ interface card	CPAC-2-40F-C
QSFP+ transceiver module for 40G fiber ports - long range (40GBase-LR)	CPAC-TR-40SR-QSFP-300m
QSFP+ transceiver module for 40G fiber ports - short range (40GBase-SR)	CPAC-TR-40LR-QSFP-10Km
40G Direct Attach Copper Cable, one meter (40BASE-CR4)	CPAC-DAC-40G-1M
40G Direct Attach Copper Cable, three meters (40BASE-CR4)	CPAC-DAC-40G-3M
Bi-directional QSFP transceiver for 40G fiber Ports - short range (40GBase-SR-BD)	CPAC-TR-40SR-QSFP-BiDi
MEMORY	SKU
Memory upgrade kit from 32GB to 64GB for 6800 Security Gateways	CPAC-RAM32GB-6800
SPARES AND MISCELLANEOUS	SKU
480 GB SSD for 6800 Security Gateways	CPAC-SSD-480G-6800
AC power supply for 6800 Security Gateways	CPAC-PSU-AC-6800
DC power supply for 6800 Security Gateways	CPAC-PSU-DC-6800
Replacement Lights-Out Management Module	CPAC-LOM-6500/6800-C
Slide rails for 6000 and 7000 Security Gateways (22" - 32")	CPAC-RAILS-6000/7000
Extended slide rails for 6000 and 7000 Security Gateways (24" - 36")	CPAC-RAILS-EXT-6000/7000