

WELCOME TO THE FUTURE OF CYBER SECURITY

# SMART-1 SECURITY MANAGEMENT PLATFORM



ALL-IN-ONE SECURITY MANAGEMENT SOLUTION, WITH POLICY MANAGEMENT, INTEGRATED THREAT VISIBILITY, WORKFLOW AND ORCHESTRATION, EMPOWERING CHECK POINT INFINITY ARCHITECTURE ACROSS ANY IT ENVIRONMENT.



## All-in-one Security Management

Industry leading Gold Standard platform for consolidated security management



## Full Threat Visibility

Single visual dashboard fully integrated with logging, monitoring and event analysis



## Enterprise-Ready Scalability

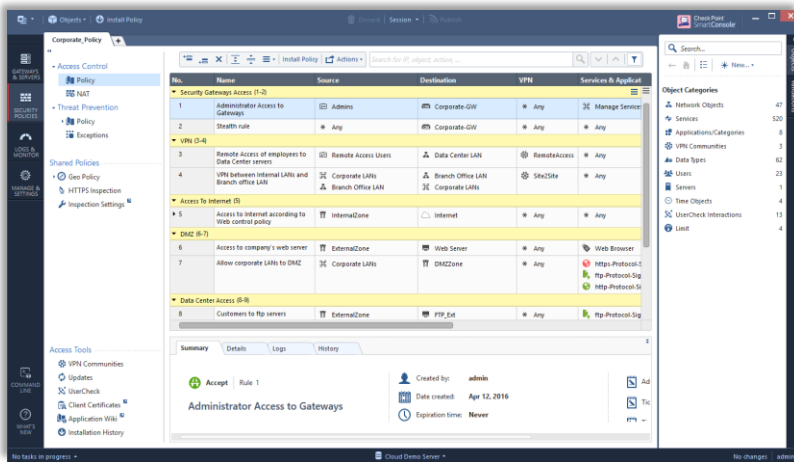
Centrally Manage up to 25 Security Gateways

# Smart-1 525



WELCOME TO THE FUTURE OF CYBER SECURITY

**SPOTLIGHT**



**Unified Console to Manage Everything**  
With one console, security teams can manage all aspects of security from policy to threat prevention – across the entire organization – on both physical and virtual environments. Consolidated management means increased operational efficiency.

In addition to a unified console, you also now have a unified policy to manage everything from users to data to gateways. Access, controlled in one policy.

**Reports & Compliance**

Take control and monitor all your gateways in real time. Easily generate and schedule reports. Over 300 Security Best Practices, regulatory compliance checks.

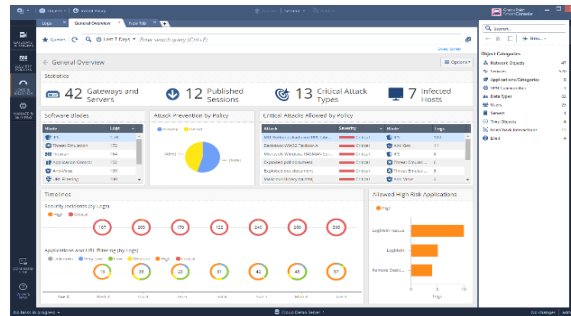


**Real Time Integrated Threat Management**

For deep forensic analysis, we've integrated logging, monitoring, events, governance and compliance. R80.x SmartConsole gives you full visibility and control across your network.

**Security Efficient Operations and APIs**

Improve productivity with automation API that orchestrates workflows and aligns security with IT processes and systems.




**Modular and Scalable**

Manage thousands of simultaneous sources, thousands of rules and millions of transactions with 4 TB of data storage in an enterprise-grade platform.



WELCOME TO THE FUTURE OF CYBER SECURITY

## SPECIFICATIONS

Enterprise Grade	
<b>Appliances</b>	<b>525</b>
	
<b>Capacity &amp; Performance</b>	
Managed Gateways	25
Peak Logs per Sec	60,000
Peak Indexed Logs per Sec	14,000/1600 <sup>1</sup>
Sustained Indexed Logs per Sec	7,000/800 <sup>1</sup>
GB per Day of Logs	205/1.5 <sup>1</sup>
<b>Hardware Specifications</b>	
Cores	4
Storage (HDD) Hot-Swappable	2x 4 TB
RAID Type	1
Memory (RAM) Default/Max	32/64 GB
<b>Network Interfaces</b>	
Default Network Interfaces	4x Copper GbE
Extended Network Interfaces	Optional
Console Port	1x DB9 <sup>2</sup>
USB Ports	4
<b>Physical</b>	
Enclosure	1U
Standard (W x D x H)	17.08 x 26.66 x 1.68 in.
Metric (W x D x H)	434 x 677.3 x 42.8 mm
Weight	13.8kg (30.42lbs.)
<b>Power</b>	
Dual, Hot-Swappable PSU	Yes
Dual, Hot-Swappable DC PSU	No
Power Input	AC 100 ~ 240V @ 50 ~ 60Hz
Power Supply Spec (max)	350W
<b>Environment Conditions</b>	
Operating Environment	50 ° to 95 ° F / 10° to 35° C, 10~80% Humidity
Storage Environment	-40 ° to 149 ° F / -40° to 65° C, 5~95% Humidity
<b>Certifications</b>	
Safety/Emissions/Environment	UL / CE, FCC Class A / RoHS

<sup>1</sup> SmartEvent configuration

<sup>2</sup> DB9 to RJ-45 adapter included

WELCOME TO THE FUTURE OF CYBER SECURITY

## ORDERING SMART-1 APPLIANCES

Smart-1 Appliances <sup>1</sup>	SKU
<b>Smart-1 525</b>	
Smart-1 525 Appliance NG Security Management for 25 gateways (SmartEvent & Compliance 1 year)	CPAP-NGSM525
Smart-1 525 Appliance, dedicated SmartEvent for 25 gateways (perpetual)	CPAP-NGSM525-EVNT
<b>Interface Cards and Transceivers</b>	
<b>SKU</b>	
2 Port 10GBase-F SFP+ interface card for Smart-1 5 series. Requires 10GBase SFP+ transceiver per port.	CPAC-2-10F-SM
SFP+ transceiver for 10G fiber ports - short range (10GBase-SR) compatible with CPAC-2-10F-SM	CPAC-TR-10SR-B
SFP+ transceiver for 10G fiber ports - long range (10GBase-LR) compatible with CPAC-2-10F-SM	CPAC-TR-10LR-B
2 Port 1GBase-F SFP interface card. Requires an additional 1GBase SFP transceiver per port.	CPAC-2-1F-SM
SFP transceiver for 1000 Base-T RJ45 (Copper)	CPAC-TR-1T-B
SFP transceiver for 1G fiber ports - short range (1000Base-SX)	CPAC-TR-1SX-B
SFP transceiver for 1G fiber ports - long range (1000Base-LX)	CPAC-TR-1LX-B
<b>Hardware Expansion</b>	
64GB RAM (replace) for Smart-1 525 management appliance	CPAC-RAM64GB-SM525
<b>Spares, Replacements and Rails</b>	
Replacement AC Power Supply for Smart-1 525 management appliance	CPAC-PSU-AC-SM525
Additional/Replacement 4TB Hard Drive for Smart-1 525 appliance	CPAC-HDD-4TB-SM525
Slide RAILS for Smart-1 525/5050 management appliances (24 inch-36 inch)	CPAC-RAILS-SM525/5050

<sup>1</sup> SmartEvent and Compliance for one year, extension SKUs are available