

CHECK POINT + MATRIX42

UNIFY ENDPOINT ACCESS AND SECURITY MANAGEMENT

Benefits

- Empower mobile productivity, allowing users access to enterprise and cloud services from multiple devices.
- Simplify and accelerate the deployment of Check Point products on mobile devices.
- Check Point Capsule Workspace provides seamless enterprise access.
- Check Point Capsule Connect connects Windows 10 Mobile devices.
- Check Point Mobile Threat Prevention detects advanced zero day threats.
- Streamline client configuration with certificate enrollment for auto-connect VPN connections to encrypt application data in transit and ensure confidentiality.

INSIGHTS

Today's mobile users demand fast, secure enterprise and cloud access on any device from anywhere in the world. These highly productive users are driving the change to a Mobile Only World.

Still managing devices? Start empowering users.

In order for corporations to keep pace with their ever-demanding users, they need to choose innovative products that deliver Unified Endpoint Management and Unified Access Management, while providing integrated security throughout. The integration of Matrix42 and Check Point products provides this unique trifecta.

Matrix42 Unified Endpoint Management addresses these challenges by enabling administrators to manage laptops, tablets and smartphones and allowing users to work with multiple devices at no extra cost. As mobile security becomes more complex, managing it doesn't have to be.

Check Point Capsule is a seamless solution that addresses your mobile access management and security needs. Capsule protects your mobile devices from threats, providing a secure business environment for mobile device use and protects business documents wherever they go.

Matrix42 Unified Endpoint Management and Check Point Mobile Threat Prevention protects these devices from advanced mobile threats, ensuring you can deploy, manage and defend against mobile malware with confidence.

FUTURE MOBILE WORKSPACE

Silverback by Matrix42, allows for the simple deployment and management of Check Point products and services across your mobile workforce. Matrix42 simplifies the enrolment, distribution and configuration of the Check Point Workspace and Capsule Connect VPN. This allows for the complete configuration of settings and credentials, including client certificate enrolment, which provides a fully configured Capsule Connect VPN with strong authentication without interruption.

Matrix42 also configures the new Capsule Connect client on Windows Phone 8.1 and Windows 10 Mobile, providing end-to-end life cycle management for the Windows ecosystem.

Matrix42's rapid mobile application deployment mechanism distributes Check Point Mobile Threat Prevention across your Mobile fleet providing a complete mobile security solution that protects devices from threats on the device (OS), in apps, and in the network, delivering the industry's highest threat catch rate for iOS and Android. Mobile Threat Prevention uses malicious app detection to find known and unknown threats by applying threat emulation, advanced static code analysis, app reputation and machine learning.

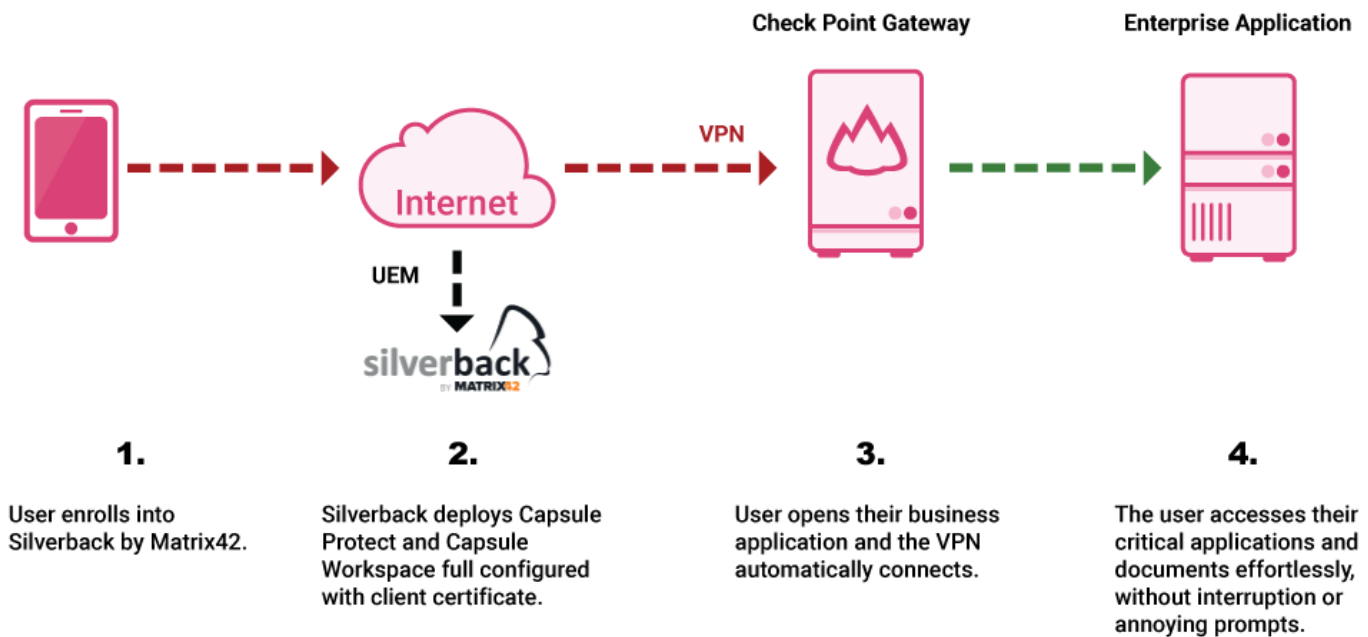
WORK ANYWHERE, FROM ANY DEVICE, WITH CONFIDENCE

Matrix42 accelerates and simplifies the management of mobile workforce with unified management of Check Point mobile security and remote access products. Together we provide a solution that is Simple, Secure and Scalable.

- On-board thousands of users in days, not weeks
- Encrypt application data to ensure confidentiality
- Provide secure, seamless remote access to authorized users
- Detect device-level vulnerabilities to reduce the attack surface

Mobile Devices

Enterprise Network



ABOUT CHECK POINT

Check Point Software Technologies Ltd. (www.checkpoint.com), is the largest pure-play security vendor globally, provides industry-leading solutions, and protects customers from cyber attacks with an unmatched catch rate of malware and other types of attacks. Check Point offers a complete security architecture defending enterprises' networks to mobile devices, in addition to the most comprehensive and intuitive security management. Check Point protects over 100,000 organizations of all sizes. At Check Point, we secure the future.

ABOUT MATRIX42

Matrix42 (Matrix42.com), is a top provider of workspace management software, which offers a 'Smarter workspace' with creative solutions for modern work environments. With more than 3,000 customers around the world, including BMW, Infineon, and Carl Zeiss, it manages their 3 million devices using its workspace management solutions.

Matrix42 operates successfully in seven countries – Germany, Austria, Switzerland, the Netherlands, the United Kingdom, Australia and the United States of America. The company's headquarters are in Frankfurt am Main in Germany.

Matrix42's products and solutions are designed to manage simply, efficiently and modern work environments– across physical, virtual, and mobile workspaces.

CONTACT US

Worldwide Headquarters | 5 Ha'Solelim Street, Tel Aviv 67897, Israel | Tel: 972-3-753-4555 | Fax: 972-3-624-1100 | Email: info@checkpoint.com

U.S. Headquarters | 959 Skyway Road, Suite 300, San Carlos, CA 94070 | Tel: 800-429-4391; 650-628-2000 | Fax: 650-654-4233 | www.checkpoint.com